



[Go to Product page](#)

Datasheet for ABIN529355
anti-Actin-Like 8 antibody (AA 1-366)

1 Image

Overview

| | |
|----------------------|---|
| Quantity: | 50 µg |
| Target: | Actin-Like 8 (ACTL8) |
| Binding Specificity: | AA 1-366 |
| Reactivity: | Human |
| Host: | Mouse |
| Clonality: | Polyclonal |
| Conjugate: | This Actin-Like 8 antibody is un-conjugated |
| Application: | Western Blotting (WB) |

Product Details

| | |
|-------------------|--|
| Purpose: | Mouse polyclonal antibody raised against a full-length human ACTL8 protein. |
| Immunogen: | ACTL8 (NP_110439.1, 1 a.a. ~ 366 a.a) full-length human protein. |
| Sequence: | MASRTVIIDH GSGFLKAGTA GWNEPQMVFP NIVNYLPCKE NPGPSYARRR VSLGIDICHP DTFSYPIERG RILNWEQVQY LWSFVLENHR REQEVPPVII TETPLREPAD RKKMLEILFE LLHVPSVLLA DQLQMSLYAS GLLTGWVVDV GYGLTRVQPF HQGRPLPASG KTLEFAGQDL SAYLLKSLFK EDCDRRCLFQ LETVAVTQMN KCYVPQNLGE ALDFRERQQS ALDESNTYQL PDGSRVELTP MQRVAPEMFF SPQVFEQPGP SIPRAIVESV ESCEISLRPL LVSHVMACGG NTLYPGFTKR LFRELMGDHV SSTKATVWEG SNRNFSWWLG ASVVAHLSTY QSEWMSREEY GEHMRM |
| Cross-Reactivity: | Human |
| Characteristics: | Antibody reactive against mammalian transfected lysate. |

Target Details

| | |
|-------------------|---|
| Target: | Actin-Like 8 (ACTL8) |
| Alternative Name: | ACTL8 (ACTL8 Products) |
| Background: | Full Gene Name: actin-like 8 Synonyms: |
| Gene ID: | 81569 |
| NCBI Accession: | NM_030812 |

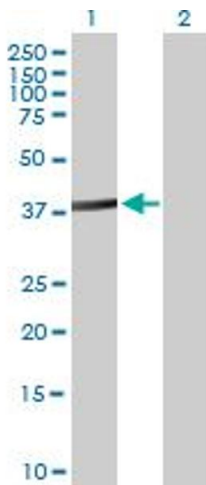
Application Details

| | |
|--------------------|--|
| Application Notes: | Optimal working dilution should be determined by the investigator. |
| Restrictions: | For Research Use only |

Handling

| | |
|------------------|--|
| Buffer: | In 1x PBS, pH 7.4 |
| Handling Advice: | Aliquot to avoid repeated freezing and thawing. |
| Storage: | -20 °C |
| Storage Comment: | Store at -20°C or lower. Aliquot to avoid repeated freezing and thawing. |

Images



Western Blotting

Image 1. Western Blot analysis of ACTL8 expression in transfected 293T cell line by ACTL8 MaxPab polyclonal antibody.

Lane 1: ACTL8 transfected lysate(40.26 kDa).

Lane 2: Non-transfected lysate.