



[Go to Product page](#)

Datasheet for ABIN529373
anti-ITM2C antibody (AA 1-230)

1 Image

Overview

Quantity:	50 µg
Target:	ITM2C
Binding Specificity:	AA 1-230
Reactivity:	Human
Host:	Mouse
Clonality:	Polyclonal
Conjugate:	This ITM2C antibody is un-conjugated
Application:	Western Blotting (WB)

Product Details

Purpose:	Mouse polyclonal antibody raised against a full-length human ITM2C protein.
Immunogen:	ITM2C (AAH25742, 1 a.a. ~ 230 a.a) full-length human protein.
Sequence:	MVKISFQPAV AGIKGDKADK ASASAPAPAS ATEILLTPAR EEQPPQHRSK RGSSVGGVCY LSMGMVLLM GLVFASVYIY RYFFLAQLAR DNFFRCGVLY EDSSLSSQVRT QMELEEDVKI YLDENYERIN VPVPQFGGGD PADIHDFQR RGTYLPQTYI IQEEMVVTEH VSDKEALGSF IYHLCNGKDT YRLRRRATRR RINKRGAKNC NAIRHFENTF VVETLICGVV
Cross-Reactivity:	Human
Characteristics:	Antibody reactive against mammalian transfected lysate.

Target Details

Target:	ITM2C
---------	-------

Target Details

Alternative Name:	ITM2C (ITM2C Products)
Background:	Full Gene Name: integral membrane protein 2C Synonyms: BRI3,BRICD2C,E25,E25C,ITM3
Gene ID:	81618

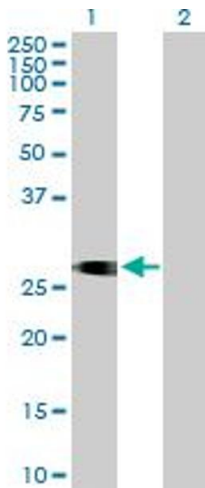
Application Details

Application Notes:	Optimal working dilution should be determined by the investigator.
Restrictions:	For Research Use only

Handling

Buffer:	In 1x PBS, pH 7.4
Handling Advice:	Aliquot to avoid repeated freezing and thawing.
Storage:	-20 °C
Storage Comment:	Store at -20°C or lower. Aliquot to avoid repeated freezing and thawing.

Images



Western Blotting

Image 1. Western Blot analysis of ITM2C expression in transfected 293T cell line by ITM2C MaxPab polyclonal antibody.

Lane 1: ITM2C transfected lysate(25.41 kDa).

Lane 2: Non-transfected lysate.