



[Go to Product page](#)

Datasheet for ABIN529390

anti-LC3B antibody (AA 1-125)

2 Images

Overview

Quantity:	100 µg
Target:	LC3B (MAP1LC3B)
Binding Specificity:	AA 1-125
Reactivity:	Human
Host:	Mouse
Clonality:	Monoclonal
Conjugate:	This LC3B antibody is un-conjugated
Application:	Western Blotting (WB), ELISA

Product Details

Purpose:	Mouse monoclonal antibody raised against a full-length recombinant MAP1LC3B.
Immunogen:	MAP1LC3B (AAH18634, 1 a.a. ~ 125 a.a) full-length recombinant protein with GST tag. MW of the GST tag alone is 26 KDa.
Sequence:	MPSEKTFKQR RTFEQRVEDV RLIREQHPTK IPVIERYKG EKQLPVLDKT KFLVPDHVNM SELIKIIRRR LQLNANQAFF LLVNGHSMVS VSTPISEVYE SEKDEDGLY MVIASQETFG MKLSV
Clone:	4G7
Isotype:	IgG2a
Cross-Reactivity:	Human
Characteristics:	Antibody Reactive Against Recombinant Protein.

Target Details

Target:	LC3B (MAP1LC3B)
Alternative Name:	MAP1LC3B (MAP1LC3B Products)
Background:	Full Gene Name: microtubule-associated protein 1 light chain 3 beta Synonyms: LC3B,MAP1A/1BLC3
Gene ID:	81631
Pathways:	Autophagy

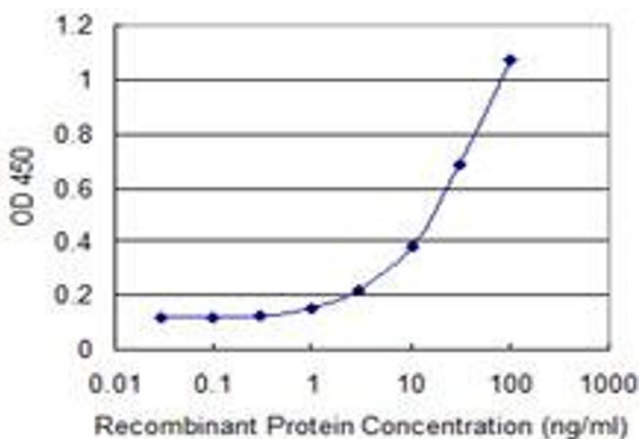
Application Details

Application Notes:	Optimal working dilution should be determined by the investigator.
Restrictions:	For Research Use only

Handling

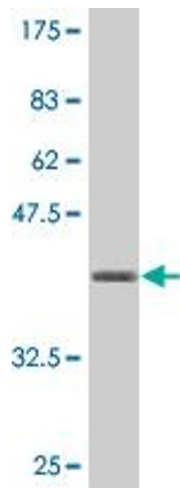
Buffer:	In 1x PBS, pH 7.4
Handling Advice:	Aliquot to avoid repeated freezing and thawing.
Storage:	-20 °C
Storage Comment:	Store at -20°C or lower. Aliquot to avoid repeated freezing and thawing.

Images



ELISA

Image 1. Detection limit for recombinant GST tagged MAP1LC3B is 0.3 ng/ml as a capture antibody.



Western Blotting

Image 2. Western Blot detection against Immunogen (39.49 KDa).