

Datasheet for ABIN529401  
**anti-NETO2 antibody (AA 1-148)**



[Go to Product page](#)

2 Images

## Overview

Quantity:	100 µg
Target:	NETO2
Binding Specificity:	AA 1-148
Reactivity:	Human
Host:	Rabbit
Clonality:	Polyclonal
Conjugate:	This NETO2 antibody is un-conjugated
Application:	Western Blotting (WB)

## Product Details

Purpose:	Rabbit polyclonal antibody raised against a full-length human NETO2 protein.
Immunogen:	NETO2 (AAH12381.1, 1 a.a. ~ 148 a.a) full-length human protein.
Sequence:	MACKTAFNKT GFQEVFDPPH YELFSLRDKE ISADLADLSE ELDNYQKMRR SSTASRCIHD HHCGSQASSV KQSRTLSSM ELPFRNDFAQ PQPMKTFNST FKKSSYTFKQ GHECPEQALE DRVMEEIPCE IYVRGREDSA QASISIDF
Cross-Reactivity:	Human
Characteristics:	Antibody reactive against mammalian transfected lysate.

## Target Details

Target:	NETO2
---------	-------

## Target Details

Alternative Name:	NETO2 ( <a href="#">NETO2 Products</a> )
Background:	Full Gene Name: neuropilin (NRP) and tolloid (TLL)-like 2 Synonyms: FLJ10430,FLJ14724,FLJ90456,NEOT2
Gene ID:	81831

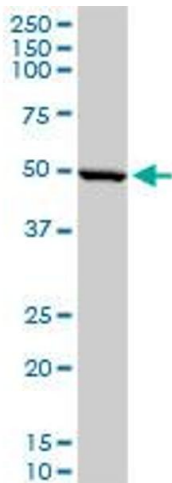
## Application Details

Application Notes:	Optimal working dilution should be determined by the investigator.
Restrictions:	For Research Use only

## Handling

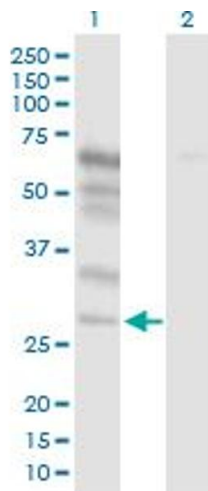
Buffer:	In 1x PBS, pH 7.4
Handling Advice:	Aliquot to avoid repeated freezing and thawing.
Storage:	-20 °C
Storage Comment:	Store at -20°C or lower. Aliquot to avoid repeated freezing and thawing.

## Images



### Western Blotting

**Image 1.** NETO2 MaxPab rabbit polyclonal antibody.  
Western Blot analysis of NETO2 expression in human liver.



### Western Blotting

**Image 2.** Western Blot analysis of NETO2 expression in transfected 293T cell line by NETO2 MaxPab polyclonal antibody.

Lane 1: NETO2 transfected lysate(17.00 kDa).

Lane 2: Non-transfected lysate.