



[Go to Product page](#)

Datasheet for ABIN529417

anti-LAS1L antibody (AA 1-734)

2 Images

Overview

Quantity:	50 µg
Target:	LAS1L
Binding Specificity:	AA 1-734
Reactivity:	Human
Host:	Mouse
Clonality:	Polyclonal
Conjugate:	This LAS1L antibody is un-conjugated
Application:	Western Blotting (WB)

Product Details

Purpose:	Mouse polyclonal antibody raised against a full-length human LAS1L protein.
Immunogen:	LAS1L (NP_112483.1, 1 a.a. ~ 734 a.a) full-length human protein.
Sequence:	MSWESGAGPG LGSQGM DLVW SAWYGKCVKG KGSLPLSAHG IVVAWLSRAE WDQVTVYLFCD DDHKLQRYAL NRITVWRSRS GNELPLAVAS TADLIRCKLL DVTGGLGTDE LRLLYGMALV RFVNLISERK TKFAKVPLKC LAQEVNIPDW IVDLRHELTH KKMPhINDCR RGCYFVLDWL QKTYWCRQLE NSLRETWELE EFREGIEEED QEEDKNIVVD DITEQKPEPQ DDGKSTESDV KADGDSKGSE EVDSHCKKAL SHKELYERAR ELLVSYEEEQ FTVLEKFRYL PKAIKAWNNP SPRVECVLAE LKGVTCENRE AVLDAFLDDG FLVPTFEQLA ALQIEYEDGQ TEVQRGEGTD PKSHKNVDLN DVLVPKPF SQ FWQPLLRLGH SQNFTQALLE RMLSELPALG ISGIRPTYIL RWTVELIVAN TKTGRNARRF SAGQWEARRG WRLFNCSASL DWPRMVESCL GSPCWASPQL LRIIFKAMGQ GLPDEEQEKL LRICSIYTS GENS LVQEGS EASPIGKSPY TLDSLYWSVK PASSSFGSEA KAQQQEEQGS VNDVKEEKE EKEVLPDQVE EEEENDDQEE EEEDEDEDDED

Product Details

EEEDRMEVGP FSTGQESPTA ENARLLAQKR GALQGS AWQV SSEDVRWDTF PLGRMPGQTE
DPAELMLENY DTMYL LDQPV LEQRLEPSTC KDTLGLSCG VGSGNCSNSS SSNFEGLLWS
QGQLHGLKTG LQLF

Cross-Reactivity: Human

Characteristics: Antibody reactive against mammalian transfected lysate.

Target Details

Target: LAS1L

Alternative Name: LAS1L ([LAS1L Products](#))

Background: Full Gene Name: LAS1-like (*S. cerevisiae*)
Synonyms: FLJ12525,dJ475B7.2

Gene ID: 81887

NCBI Accession: [NM_031206](#)

Application Details

Application Notes: Optimal working dilution should be determined by the investigator.

Restrictions: For Research Use only

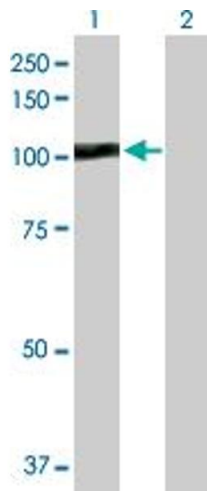
Handling

Buffer: In 1x PBS, pH 7.4

Handling Advice: Aliquot to avoid repeated freezing and thawing.

Storage: -20 °C

Storage Comment: Store at -20°C or lower. Aliquot to avoid repeated freezing and thawing.

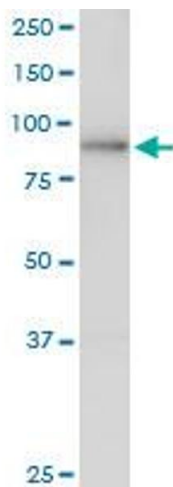


Western Blotting

Image 1. Western Blot analysis of LAS1L expression in transfected 293T cell line by LAS1L MaxPab polyclonal antibody.

Lane 1: LAS1L transfected lysate(80.74 kDa).

Lane 2: Non-transfected lysate.



Western Blotting

Image 2. LAS1L MaxPab polyclonal antibody. Western Blot analysis of LAS1L expression in HeLa.