

Datasheet for ABIN529460
anti-CCM2 antibody (AA 1-444)



[Go to Product page](#)

2 Images

Overview

Quantity:	50 µg
Target:	CCM2
Binding Specificity:	AA 1-444
Reactivity:	Human
Host:	Mouse
Clonality:	Polyclonal
Conjugate:	This CCM2 antibody is un-conjugated
Application:	Western Blotting (WB)

Product Details

Purpose:	Mouse polyclonal antibody raised against a full-length human CCM2 protein.
Immunogen:	CCM2 (NP_113631.1, 1 a.a. ~ 444 a.a) full-length human protein.
Sequence:	MEEEGKKGKK PGIVSPFKRV FLKGEKSRDK KAHEKVTERR PLHTVLSLP ERVEPDRLLS DYIEKEVKYL GQLTSIPGYL NPSSRTEILH FIDNAKRAHQ LPGHLTQEHD AVL SLSAYNV KLAWRDGEDI ILRVPIHDIA AVSYVRDDAA HLVLKTAQD PGISPSQSLC AESSRGLSAG SLSESAVGVPV EACCLVILAA ESKVAAEELC CLLGQVFQVV YTESTIDFLD RAIFDGASTP THHLSLHSDD SSTKVDIKET YEVEASTFCF PESVDVGGAS PHSKTISESE LSASATELLQ DYMLTLR TKL SSQEIQQFAA LLHEYRNGAS IHEFCINLRQ LYGDSRKFL LGLRPFPIEK DSQHFENFLE TIGVKDGRGI ITDSFGRHRR ALSTTSSSTT NGNRATGSSD DR SAPSEGDE WDRMISDISS DIEALGCSMD QDSA
Cross-Reactivity:	Human

Product Details

Characteristics: Antibody reactive against mammalian transfected lysate.

Target Details

Target: CCM2

Alternative Name: CCM2 ([CCM2 Products](#))

Background: Full Gene Name: cerebral cavernous malformation 2
Synonyms: C7orf22,MGC4067,MGC4607,MGC74868,PP10187

Gene ID: 83605

NCBI Accession: [NM_031443](#)

Pathways: [Cell-Cell Junction Organization](#)

Application Details

Application Notes: Optimal working dilution should be determined by the investigator.

Restrictions: For Research Use only

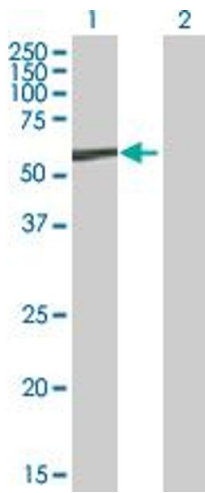
Handling

Buffer: In 1x PBS, pH 7.4

Handling Advice: Aliquot to avoid repeated freezing and thawing.

Storage: -20 °C

Storage Comment: Store at -20°C or lower. Aliquot to avoid repeated freezing and thawing.

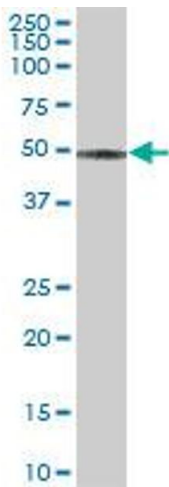


Western Blotting

Image 1. Western Blot analysis of CCM2 expression in transfected 293T cell line by CCM2 MaxPab polyclonal antibody.

Lane 1: CCM2 transfected lysate(48.84 KDa).

Lane 2: Non-transfected lysate.



Western Blotting

Image 2. CCM2 MaxPab polyclonal antibody. Western Blot analysis of CCM2 expression in human placenta.