



[Go to Product page](#)

Datasheet for ABIN529469
anti-CRISPLD1 antibody (AA 1-500)

1 Image

Overview

Quantity:	50 µg
Target:	CRISPLD1
Binding Specificity:	AA 1-500
Reactivity:	Human
Host:	Mouse
Clonality:	Polyclonal
Conjugate:	This CRISPLD1 antibody is un-conjugated
Application:	Western Blotting (WB)

Product Details

Purpose:	Mouse polyclonal antibody raised against a full-length human CRISPLD1 protein.
Immunogen:	CRISPLD1 (NP_113649, 1 a.a. ~ 500 a.a) full-length human protein.
Sequence:	MKCTAREWLR VTTVLFMARA IPAMVVPNAT LLEKLLEKYM DEDGEWWIAK QRGKRAITDN DMQSILDLHN KLRSQVYPTA SNMEYMTWDV ELERSAESWA ESCLWEHGPA SLLPSIGQNL GAHWGRYRPP TFHVQSWYDE VKDFSYPYEH ECNPYCPFRC SGPVCTHYTQ VVWATSNRIG CAINLCHNMN IWGQIWPKAV YLVCNYSYSPKG NWWGHAPYKH GRPCSACPPS FGGGRENLC YKEGSDRYYP PREEETNEIE RQQSQVHDTL VRTSRDSSR NEVISAQQMS QIVSCEVRLR DQCKGTTTCNR YECPAGCLDS KAKVIGSVHY EMQSSICRAA IHYGIIDNDG GWVDITRQGR KHVFIKSNRN GIQTIGKYQS ANSFTVSKVT VQAVTCETTV EQLCPFHKPA SHCPRVYCP NCMQANPHYA RVIGTRVYSD LSSICRAAVH AGVVRNHGGY VDMPVVKRKR TYIASFQNGI FSESLQNPPG GKAFRVFAVV

Product Details

Cross-Reactivity:	Human
Characteristics:	Antibody reactive against mammalian transfected lysate.

Target Details

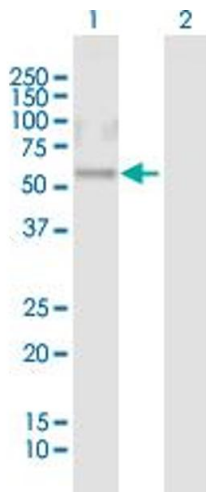
Target:	CRISPLD1
Alternative Name:	CRISPLD1 (CRISPLD1 Products)
Background:	Full Gene Name: cysteine-rich secretory protein LCCL domain containing 1 Synonyms: CRISP10,DKFZp762F133,LCRISP1
Gene ID:	83690
NCBI Accession:	NM_031461

Application Details

Application Notes:	Optimal working dilution should be determined by the investigator.
Restrictions:	For Research Use only

Handling

Buffer:	In 1x PBS, pH 7.4
Handling Advice:	Aliquot to avoid repeated freezing and thawing.
Storage:	-20 °C
Storage Comment:	Store at -20°C or lower. Aliquot to avoid repeated freezing and thawing.



Western Blotting

Image 1. Western Blot analysis of CRISPLD1 expression in transfected 293T cell line by CRISPLD1 MaxPab polyclonal antibody.

Lane 1: CRISPLD1 transfected lysate(55 KDa).

Lane 2: Non-transfected lysate.