



[Go to Product page](#)

Datasheet for ABIN529483
anti-INHBE antibody (AA 1-350)

1 Image

Overview

Quantity:	50 µg
Target:	INHBE
Binding Specificity:	AA 1-350
Reactivity:	Human
Host:	Mouse
Clonality:	Polyclonal
Conjugate:	This INHBE antibody is un-conjugated
Application:	Western Blotting (WB)

Product Details

Purpose:	Mouse polyclonal antibody raised against a full-length human INHBE protein.
Immunogen:	INHBE (NP_113667.1, 1 a.a. ~ 350 a.a) full-length human protein.
Sequence:	MRLPDVQLWL VLLWALVRAQ GTGSCVPCSCG GSKLAPQAER ALVLELAKQQ ILDGLHLTSR PRITHPPPQA ALTRALRRLQ PGSVAPNGE EVISFATVTD STSAYSSLLT FHLSTPRSHH LYHARLWLHV LPTLPGTLCL RIFRWGPRRR RQGSRTLLAE HHITNLGWHT LTLPSSGLRG EKSGVLKLQL DCRPLEGNST VTGQPRRLD TAGHQPFLE LKIRANEPGA GRARRRTPTC EPATPLCCRR DHYVDFQELG WRDWILQPEG YQLNYCSGQC PPHLAGSPGI AASFHSAVFS LLKANNPWA STSCCVPTAR RPLSLLYLDH NGNVVKTDPV DMVVEACGCS
Cross-Reactivity:	Human
Characteristics:	Antibody reactive against mammalian transfected lysate.

Target Details

Target: INHBE

Alternative Name: INHBE ([INHBE Products](#))

Background: Full Gene Name: inhibin, beta E
Synonyms: MGC4638

Gene ID: 83729

NCBI Accession: [NM_031479](#)

Pathways: [Peptide Hormone Metabolism](#), [Hormone Activity](#), [SARS-CoV-2 Protein Interactome](#)

Application Details

Application Notes: Optimal working dilution should be determined by the investigator.

Restrictions: For Research Use only

Handling

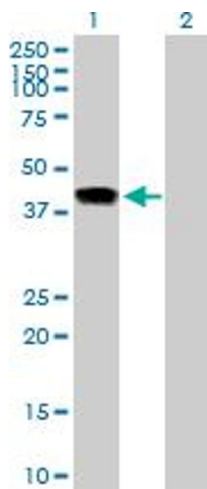
Buffer: In 1x PBS, pH 7.4

Handling Advice: Aliquot to avoid repeated freezing and thawing.

Storage: -20 °C

Storage Comment: Store at -20°C or lower. Aliquot to avoid repeated freezing and thawing.

Images



Western Blotting

Image 1. Western Blot analysis of INHBE expression in transfected 293T cell line by INHBE MaxPab polyclonal antibody.

Lane 1: INHBE transfected lysate(38.5 KDa).

Lane 2: Non-transfected lysate.