



[Go to Product page](#)

Datasheet for ABIN529484
anti-INHBE antibody (AA 1-350)

4 Images

Overview

Quantity:	100 µL
Target:	INHBE
Binding Specificity:	AA 1-350
Reactivity:	Human
Host:	Rabbit
Clonality:	Polyclonal
Conjugate:	This INHBE antibody is un-conjugated
Application:	Western Blotting (WB), Immunoprecipitation (IP)

Product Details

Purpose:	Rabbit polyclonal antibody raised against a full-length human INHBE protein.
Immunogen:	INHBE (NP_113667.1, 1 a.a. ~ 350 a.a) full-length human protein.
Sequence:	MRLPDVQLWL VLLWALVRAQ GTGSCVPCSCG GSKLAPQAER ALVLELAKQQ ILDGLHLTSR PRITHPPPQA ALTRALRRLQ PGSVAPNGE EVISFATVTD STSAYSSLLT FHLSTPRSHH LYHARLWLHV LPTLPGTLCL RIFRWGPRRR RQGSRTLLAE HHITNLGWHT LTLPSSGLRG EKSGVLKLQL DCRPLEGNST VTGQPRRLD TAGHQPFLE LKIRANEPGA GRARRRTPTC EPATPLCCRR DHYVDFQELG WRDWILQPEG YQLNYCSGQC PPHLAGSPGI AASFHSAVFS LLKANNPWA STSCCVPTAR RPLSLLYLDH NGNVVKTDPV DMVVEACGCS
Cross-Reactivity:	Human, Mouse
Characteristics:	Antibody reactive against mammalian transfected lysate.

Target Details

Target:	INHBE
Alternative Name:	INHBE (INHBE Products)
Background:	Full Gene Name: inhibin, beta E Synonyms: MGC4638
Gene ID:	83729
NCBI Accession:	NM_031479
Pathways:	Peptide Hormone Metabolism , Hormone Activity , SARS-CoV-2 Protein Interactome

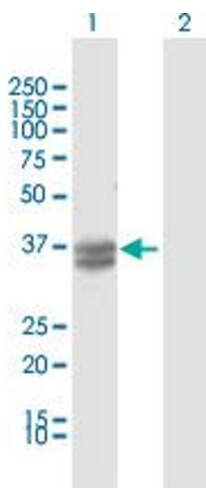
Application Details

Application Notes:	Optimal working dilution should be determined by the investigator.
Restrictions:	For Research Use only

Handling

Format:	Liquid
Buffer:	No additive
Preservative:	Without preservative
Handling Advice:	Aliquot to avoid repeated freezing and thawing.
Storage:	-20 °C
Storage Comment:	Store at -20°C or lower. Aliquot to avoid repeated freezing and thawing.

Images

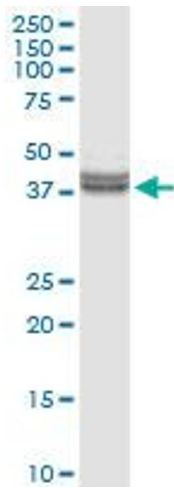


Western Blotting

Image 1. Western Blot analysis of INHBE expression in transfected 293T cell line by INHBE MaxPab polyclonal antibody.

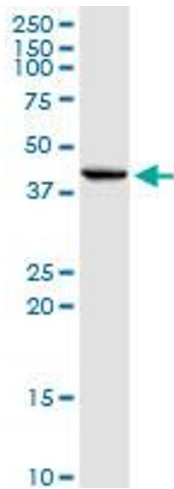
Lane 1: INHBE transfected lysate(38.6 KDa).

Lane 2: Non-transfected lysate.



Western Blotting

Image 2. INHBE MaxPab rabbit polyclonal antibody.
Western Blot analysis of INHBE expression in human liver.



Western Blotting

Image 3. INHBE MaxPab rabbit polyclonal antibody.
Western Blot analysis of INHBE expression in mouse liver.

Please check the [product details page](#) for more images. Overall 4 images are available for ABIN529484.