



Datasheet for ABIN529494
anti-MARVELD1 antibody (AA 1-173)



[Go to Product page](#)

1 Image

Overview

Quantity:	50 µg
Target:	MARVELD1
Binding Specificity:	AA 1-173
Reactivity:	Human
Host:	Mouse
Clonality:	Polyclonal
Conjugate:	This MARVELD1 antibody is un-conjugated
Application:	Western Blotting (WB)

Product Details

Purpose:	Mouse polyclonal antibody raised against a full-length human MARVELD1 protein.
Immunogen:	MARVELD1 (NP_113672.1, 1 a.a. ~ 173 a.a) full-length human protein.
Sequence:	MLPPPPRQPP PQARAARGAV RLQRPFLRSP LGVLRLLQLL AGAAFWITIA TSKYQGPVHF ALFVSVLFWL LTLGLYFLTL LGKHELVPVL GSRWLMVNVA HDVLAAALYG AATGIMSDQM QRHSYCNLKD YPLPCAYHAF LAAAVCGGVC HGLYLLSALY GCGRRCQGKQ EVA
Cross-Reactivity:	Human
Characteristics:	Antibody reactive against mammalian transfected lysate.

Target Details

Target:	MARVELD1
---------	----------

Target Details

Alternative Name:	MARVELD1 (MARVELD1 Products)
Background:	Full Gene Name: MARVEL domain containing 1 Synonyms: FLJ22343,FLJ23440,GB14,MARVD1,MGC4415,MRVLDC1,RP11-548K23.8,bA548K23.8
Gene ID:	83742

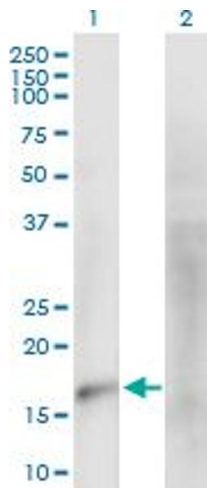
Application Details

Application Notes:	Optimal working dilution should be determined by the investigator.
Restrictions:	For Research Use only

Handling

Buffer:	In 1x PBS, pH 7.4
Handling Advice:	Aliquot to avoid repeated freezing and thawing.
Storage:	-20 °C
Storage Comment:	Store at -20°C or lower. Aliquot to avoid repeated freezing and thawing.

Images



Western Blotting

Image 1. Western Blot analysis of MARVELD1 expression in transfected 293T cell line by MARVELD1 MaxPab polyclonal antibody.

Lane 1: MARVELD1 transfected lysate(18.90 kDa).

Lane 2: Non-transfected lysate.