



[Go to Product page](#)

Datasheet for ABIN529507
anti-SETDB2 antibody (AA 451-550)

2 Images

Overview

Quantity:	100 µg
Target:	SETDB2
Binding Specificity:	AA 451-550
Reactivity:	Human
Host:	Mouse
Clonality:	Monoclonal
Conjugate:	This SETDB2 antibody is un-conjugated
Application:	Western Blotting (WB), ELISA

Product Details

Purpose:	Mouse monoclonal antibody raised against a partial recombinant SETDB2.
Immunogen:	SETDB2 (NP_114121.1, 451 a.a. ~ 550 a.a) partial recombinant protein with GST tag. MW of the GST tag alone is 26 KDa.
Sequence:	HPRTAKTEKC PPKFSNNPKE LTMETKYDNI SRIQYHSVIR DPESKTAIFQ HNGKKMEFVS SESVTPEDND GFKPPREHLN SKTKGAQKDS SSNHVDEFED
Clone:	2F4
Isotype:	IgG2a
Cross-Reactivity:	Human
Characteristics:	Antibody Reactive Against Recombinant Protein.

Target Details

Target:	SETDB2
Alternative Name:	SETDB2 (SETDB2 Products)
Background:	Full Gene Name: SET domain, bifurcated 2 Synonyms: C13orf4,CLLD8,CLLL8,DKFZp586I0123,DKFZp761J1217,KMT1F
Gene ID:	83852
NCBI Accession:	NM_031915

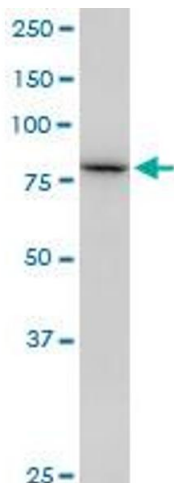
Application Details

Application Notes:	Optimal working dilution should be determined by the investigator.
Restrictions:	For Research Use only

Handling

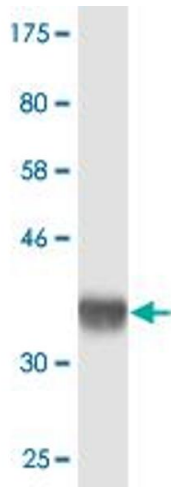
Buffer:	In 1x PBS, pH 7.4
Handling Advice:	Aliquot to avoid repeated freezing and thawing.
Storage:	-20 °C
Storage Comment:	Store at -20°C or lower. Aliquot to avoid repeated freezing and thawing.

Images



Western Blotting

Image 1. SETDB2 monoclonal antibody (M17), clone 2F4.
Western Blot analysis of SETDB2 expression in A-431.



Western Blotting

Image 2. Western Blot detection against Immunogen (36.74 kDa).