



[Go to Product page](#)

Datasheet for ABIN529512  
**anti-KLF16 antibody (AA 1-252)**

2 Images

Overview

Quantity:	100 µg
Target:	KLF16
Binding Specificity:	AA 1-252
Reactivity:	Human
Host:	Rabbit
Clonality:	Polyclonal
Conjugate:	This KLF16 antibody is un-conjugated
Application:	Western Blotting (WB)

Product Details

Purpose:	Rabbit polyclonal antibody raised against a full-length human KLF16 protein.
Immunogen:	KLF16 (AAI48794.1, 1 a.a. ~ 252 a.a) full-length human protein.
Sequence:	MSAAVACVDY FAADVLMAIS SGAVVHRGRP GPEGAGPAAG LDVRAARREA ASPGTPGPPP PPPAASGPGP GAAAAPHLLA ASILADLRGG PGAAPGGASP ASSSSAASSP SSGRAPGAAP SAAAKSHRCP FPDCAKAYYK SSHLKSHLRT HTGERPFACD WQGCDDKKFAR SDELARHHRT HTGEKRFSCP LCSKRFRTRSD HLAKHARRHP GFHPDLLRRP GARSTSPSDS LPCSLAGSPA PSPAPSPAPA GL
Cross-Reactivity:	Human, Mouse
Characteristics:	Antibody reactive against mammalian transfected lysate.

## Target Details

Target:	KLF16
Alternative Name:	KLF16 ( <a href="#">KLF16 Products</a> )
Background:	Full Gene Name: Kruppel-like factor 16 Synonyms: BTEB4,DRRF,NSLP2
Gene ID:	83855

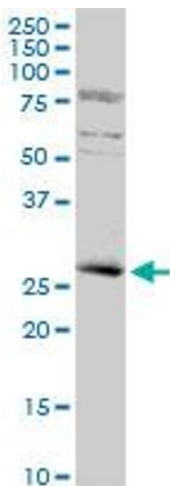
## Application Details

Application Notes:	Optimal working dilution should be determined by the investigator.
Restrictions:	For Research Use only

## Handling

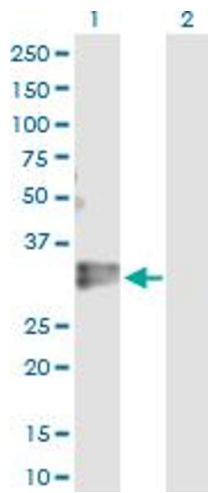
Buffer:	In 1x PBS, pH 7.4
Handling Advice:	Aliquot to avoid repeated freezing and thawing.
Storage:	-20 °C
Storage Comment:	Store at -20°C or lower. Aliquot to avoid repeated freezing and thawing.

## Images



### Western Blotting

**Image 1.** KLF16 MaxPab rabbit polyclonal antibody. Western Blot analysis of KLF16 expression in mouse kidney.



### Western Blotting

**Image 2.** Western Blot analysis of KLF16 expression in transfected 293T cell line by KLF16 MaxPab polyclonal antibody.

Lane 1: KLF16 transfected lysate(27.72 kDa).

Lane 2: Non-transfected lysate.