



[Go to Product page](#)

Datasheet for ABIN529554
anti-KIRREL2 antibody (AA 1-219)

1 Image

Overview

Quantity:	100 µg
Target:	KIRREL2
Binding Specificity:	AA 1-219
Reactivity:	Human
Host:	Rabbit
Clonality:	Polyclonal
Conjugate:	This KIRREL2 antibody is un-conjugated
Application:	Western Blotting (WB)

Product Details

Purpose:	Rabbit polyclonal antibody raised against a full-length human KIRREL2 protein.
Immunogen:	KIRREL2 (AAH07312.1, 1 a.a. ~ 219 a.a) full-length human protein.
Sequence:	MLRMRVPALL VLLFCFRGRA GPSPHLQQP EDLVLLGEG GAQASLGRRA SASFSEQKNL MRIPGSSDGS SSRGPEEEET GSREDRGPV HTDHSDLVLE EEGTLETKDP TNGYYKVRGV SVLSLGEAP GGGLFLPPPS PLGPPGTPTF YDFNPHLGMV PPCRLYRARA GYLTTPHRA FTSYIKPTSF GPPDLAPGTP PFPYAAFPTP SHPRLQTHV
Cross-Reactivity:	Human
Characteristics:	Antibody reactive against mammalian transfected lysate.

Target Details

Target:	KIRREL2
---------	---------

Target Details

Alternative Name:	KIRREL2 (KIRREL2 Products)
Background:	Full Gene Name: kin of IRRE like 2 (Drosophila) Synonyms: DKFZp564A1164,FILTRIN,MGC15718,NEPH3,NLG1
Gene ID:	84063

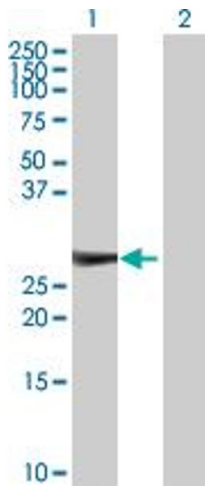
Application Details

Application Notes:	Optimal working dilution should be determined by the investigator.
Restrictions:	For Research Use only

Handling

Buffer:	In 1x PBS, pH 7.4
Handling Advice:	Aliquot to avoid repeated freezing and thawing.
Storage:	-20 °C
Storage Comment:	Store at -20°C or lower. Aliquot to avoid repeated freezing and thawing.

Images



Western Blotting

Image 1. Western Blot analysis of KIRREL2 expression in transfected 293T cell line by KIRREL2 MaxPab polyclonal antibody.

Lane 1: KIRREL2 transfected lysate(23.60 kDa).

Lane 2: Non-transfected lysate.