



Datasheet for ABIN529588  
**anti-RPF2 antibody (AA 1-306)**



[Go to Product page](#)

1 Image

Overview

Quantity:	50 µg
Target:	RPF2
Binding Specificity:	AA 1-306
Reactivity:	Human
Host:	Mouse
Clonality:	Polyclonal
Conjugate:	This RPF2 antibody is un-conjugated
Application:	Western Blotting (WB)

Product Details

Purpose:	Mouse polyclonal antibody raised against a full-length human BXDC1 protein.
Immunogen:	BXDC1 (NP_115570.1, 1 a.a. ~ 306 a.a) full-length human protein.
Sequence:	MDTLDRVVKP KTKRAKRFLE KREPKLNENI KNAMLIKGGN ANATVTKVLK DVYALKKPYG VLYKKNITR PFEDQTSLEF FSKKSDCSLF MFGSHNKKRP NNLVIGRMYD YHVLDMIELG IENFVSLKDI KNSKCEGTK PMLIFAGDDF DVTEDYRRLK SLLIDFFRGP TVSNIRLAGL EYVLHFTALN GKIYFRSYKL LLLKSGCRTP RIELEEMGPS LDLVLRRTHL ASDDLYKLSM KMPKALKPKK KKNISHDTFG TTYGRIHMQK QDLSKLQTRK MKGLKKRPAE RITEDHEKKS KRIKKN
Cross-Reactivity:	Human
Characteristics:	Antibody reactive against mammalian transfected lysate.

## Target Details

Target: RPF2

Alternative Name: BXDC1 ([RPF2 Products](#))

Background: Full Gene Name: brix domain containing 1  
Synonyms: FLJ21087,RPF2,bA397G5.4

Gene ID: 84154

NCBI Accession: [NM\\_032194](#)

Pathways: [Ribonucleoprotein Complex Subunit Organization](#), [Ribosome Assembly](#)

## Application Details

Application Notes: Optimal working dilution should be determined by the investigator.

Restrictions: For Research Use only

## Handling

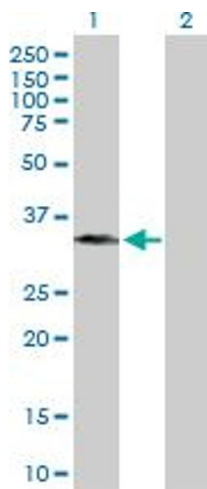
Buffer: In 1x PBS, pH 7.4

Handling Advice: Aliquot to avoid repeated freezing and thawing.

Storage: -20 °C

Storage Comment: Store at -20°C or lower. Aliquot to avoid repeated freezing and thawing.

## Images



### Western Blotting

**Image 1.** Western Blot analysis of BXDC1 expression in transfected 293T cell line by BXDC1 MaxPab polyclonal antibody.

Lane 1: BXDC1 transfected lysate(33.66 KDa).

Lane 2: Non-transfected lysate.