



[Go to Product page](#)

Datasheet for ABIN529624

anti-FLYWCH1 antibody (AA 1-716)

2 Images

Overview

Quantity:	50 µg
Target:	FLYWCH1
Binding Specificity:	AA 1-716
Reactivity:	Human
Host:	Mouse
Clonality:	Polyclonal
Conjugate:	This FLYWCH1 antibody is un-conjugated
Application:	Western Blotting (WB), Immunofluorescence (IF)

Product Details

Purpose:	Mouse polyclonal antibody raised against a full-length human FLYWCH1 protein.
Immunogen:	FLYWCH1 (AAH28572.1, 1 a.a. ~ 716 a.a) full-length human protein.
Sequence:	MPLPEPSEQE GESVKAGQEP SPKPGTDVIP AAPRKPREFS KLVLLTASDQ DEDGVGSKPQ EVHCVLSLEM AGPATLASTL QILPVEEQGG VVQPALEMPE QKCSKLDAAA PQSLEFLRTP FGGRLLVLES FLYKQEKA VG DKVYWKCRQH AELGCRGRAI TRGLRATVMR GHCHAPDEQG LEARRQREKL PSLALPEGLG EPQGPEGPGG RVEEPLEGVG PWQCPEEPEP TPGLVLSKPA LEEEEAPRAL SLLSLPPKKR SILGLGQARP LEFLRTC YGG SFLVHESFLY KREKAVGDKV YWTCDHALH GCRSRAITQG QRVTVMRGHC HQPDMEGLEA RRQKEKAVET LQAGQDGP GS QVDTLLRGVD SLLYRRGPGP LTLTRPRRK RAKVEDQELP TQPEAPDEHQ DMDADPGGPE FLKTPGGSF LYESFLYRR EKAAGEKVYW TCRDQARMGC RSRAITQGRR VTMRGHCHP PDLGGLEALR QREKRPNTAQ RGSPGGPEFL KTPLGGSFLV YESFLYRREK AAGEKVYWTC RDQARMGCRS RAITQGRRVM VMRRHCHPPD LGGLEALRQR EHFPNLAQWD SPDPLRPLEF

Product Details

LRTSLGGRFL VHESFLYRKE KAAGEKVYWM CRDQARLGCR SRAITQGHRI MVMRSHCHQP
DLAGLGALRQ RERLPTTAQQ EDPEKIQVQL CFKTCSPESQ QIYGDIKDVR LDGESQ

Cross-Reactivity: Human

Characteristics: Antibody reactive against mammalian transfected lysate.

Target Details

Target: FLYWCH1

Alternative Name: FLYWCH1 ([FLYWCH1 Products](#))

Background: Full Gene Name: FLYWCH-type zinc finger 1

Synonyms:

Gene ID: 84256

Application Details

Application Notes: Optimal working dilution should be determined by the investigator.

Restrictions: For Research Use only

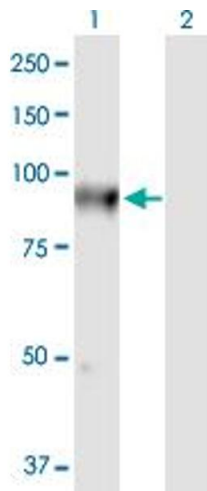
Handling

Buffer: In 1x PBS, pH 7.4

Handling Advice: Aliquot to avoid repeated freezing and thawing.

Storage: -20 °C

Storage Comment: Store at -20°C or lower. Aliquot to avoid repeated freezing and thawing.

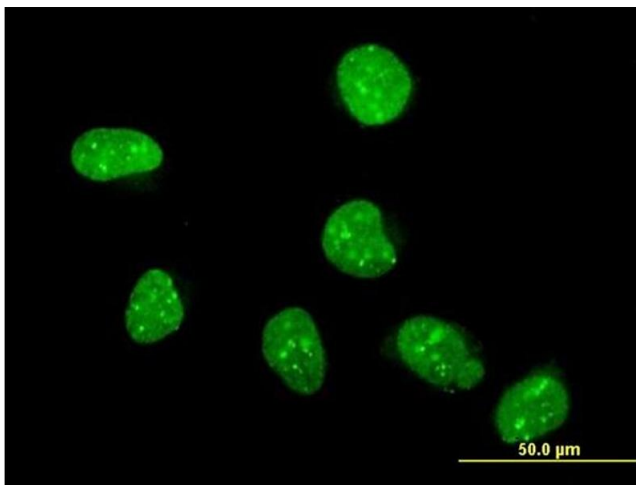


Western Blotting

Image 1. Western Blot analysis of FLYWCH1 expression in transfected 293T cell line by FLYWCH1 MaxPab polyclonal antibody.

Lane 1: FLYWCH1 transfected lysate(78.76 KDa).

Lane 2: Non-transfected lysate.



Immunofluorescence

Image 2. Immunofluorescence of purified MaxPab antibody to FLYWCH1 on HeLa cell. [antibody concentration 10 ug/ml]