



[Go to Product page](#)

Datasheet for ABIN529636  
**anti-BTBD10 antibody (AA 1-475)**

1 Image

Overview

Quantity:	50 µg
Target:	BTBD10
Binding Specificity:	AA 1-475
Reactivity:	Human
Host:	Mouse
Clonality:	Polyclonal
Conjugate:	This BTBD10 antibody is un-conjugated
Application:	Western Blotting (WB)

Product Details

Purpose:	Mouse polyclonal antibody raised against a full-length human BTBD10 protein.
Immunogen:	BTBD10 (NP_115696.2, 1 a.a. ~ 475 a.a) full-length human protein.
Sequence:	MAGRPHPYDG NSSDPENWDR KLHSRPRKLY KHSSTSSRIA KGGVDHTKMS LHGASGGHER SRDRRRSSDR SRDSSHERTE SQLTPCIRNV TSPTRQHHVE REKDHSSSRP SSPRPQKASP NGSISSAGNS SRNSSQSSSD GSCKTAGEMV FVYENAKEGA RNIRTSERV LVDNTRFW DPSIFTAQPN TMLGRMFGSG REHNFTRPNE KGEYEVAEGI GSTVFRAILD YYKTGIIRCP DGISPELRE ACDYLCISFE YSTIKCRDLS ALMHELSNDG ARRQFEFYLE EMILPLMVAS AQSGERECHI VVLTDDDDVD WDEEYPPQMG EEYSQIIYST KLYRFFKYIE NRDVAKSVLK ERGLKKIRLG IEGYPTYKEK VKKRPGRPE VIYNYVQRPF IRMSWEKEEG KSRHVDFQCV KSKSITNLAA AAADIPQDQL VVMHPTPQVD ELDILPIHPP SGNSDLDPDA QNPML
Cross-Reactivity:	Human

## Product Details

Characteristics: Antibody reactive against mammalian transfected lysate.

## Target Details

Target: BTBD10

Alternative Name: BTBD10 ([BTBD10 Products](#))

Background: Full Gene Name: BTB (POZ) domain containing 10  
Synonyms: GMRP-1,GMRP1,MGC13007

Gene ID: 84280

NCBI Accession: [NM\\_032320](#)

## Application Details

Application Notes: Optimal working dilution should be determined by the investigator.

Restrictions: For Research Use only

## Handling

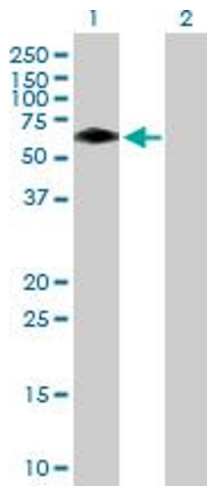
Buffer: In 1x PBS, pH 7.4

Handling Advice: Aliquot to avoid repeated freezing and thawing.

Storage: -20 °C

Storage Comment: Store at -20°C or lower. Aliquot to avoid repeated freezing and thawing.

## Images



### Western Blotting

**Image 1.** Western Blot analysis of BTBD10 expression in transfected 293T cell line by BTBD10 MaxPab polyclonal antibody.

Lane 1: BTBD10 transfected lysate(52.25 KDa).

Lane 2: Non-transfected lysate.