



[Go to Product page](#)

Datasheet for ABIN529638

## anti-RNF135 antibody (AA 1-210)

### 2 Images

#### Overview

Quantity:	100 µg
Target:	RNF135
Binding Specificity:	AA 1-210
Reactivity:	Human
Host:	Rabbit
Clonality:	Polyclonal
Conjugate:	This RNF135 antibody is un-conjugated
Application:	Western Blotting (WB)

#### Product Details

Purpose:	Rabbit polyclonal antibody raised against a full-length human RNF135 protein.
Immunogen:	RNF135 (NP_922921.1, 1 a.a. ~ 210 a.a) full-length human protein.
Sequence:	MAGLGLGSAV PVWLAEDDLG CIICQGLLDW PATLPCGHSF CRHCLEALWG ARDARRWACP TCRQGAAQQP HLRKNTLLQD LADKYRRAAR EIQAGSDPAH CPCPGSSSL SAAARPRRRP ELQRVAVEKS ITEVAQELTE LVEHLVDIVR SLQNQRPLSE SGPDNELSIL GKENSWKPRL PPHAHCLTRA TLHSGELLGL LSGPSIQPLT
Cross-Reactivity:	Human
Characteristics:	Antibody reactive against mammalian transfected lysate.

#### Target Details

Target:	RNF135
---------	--------

## Target Details

Alternative Name:	RNF135 ( <a href="#">RNF135 Products</a> )
Background:	Full Gene Name: ring finger protein 135 Synonyms: L13,MGC13061,Riplet
Gene ID:	84282
NCBI Accession:	<a href="#">NM_197939</a>

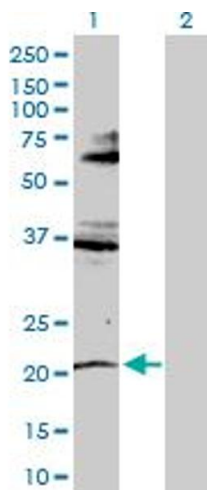
## Application Details

Application Notes:	Optimal working dilution should be determined by the investigator.
Restrictions:	For Research Use only

## Handling

Buffer:	In 1x PBS, pH 7.4
Handling Advice:	Aliquot to avoid repeated freezing and thawing.
Storage:	-20 °C
Storage Comment:	Store at -20°C or lower. Aliquot to avoid repeated freezing and thawing.

## Images

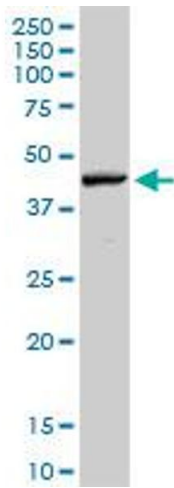


### Western Blotting

**Image 1.** Western Blot analysis of RNF135 expression in transfected 293T cell line by RNF135 MaxPab polyclonal antibody.

Lane 1: RNF135 transfected lysate(22.90 KDa).

Lane 2: Non-transfected lysate.



### Western Blotting

**Image 2.** RNF135 MaxPab rabbit polyclonal antibody.  
Western Blot analysis of RNF135 expression in human liver.