



[Go to Product page](#)

Datasheet for ABIN529640
anti-C1orf57 antibody (AA 1-190)

1 Image

Overview

| | |
|----------------------|--|
| Quantity: | 50 µg |
| Target: | C1orf57 (NTPCR) |
| Binding Specificity: | AA 1-190 |
| Reactivity: | Human |
| Host: | Mouse |
| Clonality: | Polyclonal |
| Conjugate: | This C1orf57 antibody is un-conjugated |
| Application: | Western Blotting (WB) |

Product Details

| | |
|-------------------|--|
| Purpose: | Mouse polyclonal antibody raised against a full-length human C1orf57 protein. |
| Immunogen: | C1orf57 (NP_115700.1, 1 a.a. ~ 190 a.a) full-length human protein. |
| Sequence: | MARHVFLTGP PGVGKTTLIH KASEVLKSSG VPVDGFYTEE VRQGRRIGF DVVTLSTGTRG PLSRVBLEPP PGKRECRVQ YVDLTSFEQ LALPVLNAD CSSGPGQRVC VIDEIGKMEL FSQLFIQAVR QTLSTPGTII LGTIPVPKGK PLALVEEIRN RKDVKVFNVT KENRNHLLPD IVTCVQSSRK |
| Cross-Reactivity: | Human |
| Characteristics: | Antibody reactive against mammalian transfected lysate. |

Target Details

| | |
|---------|-----------------|
| Target: | C1orf57 (NTPCR) |
|---------|-----------------|

Target Details

| | |
|-------------------|--|
| Alternative Name: | C1orf57 (NTPCR Products) |
| Background: | Full Gene Name: chromosome 1 open reading frame 57 Synonyms: FLJ11383,MGC13186,RP4-678E16.2 |
| Gene ID: | 84284 |
| NCBI Accession: | NM_032324 |

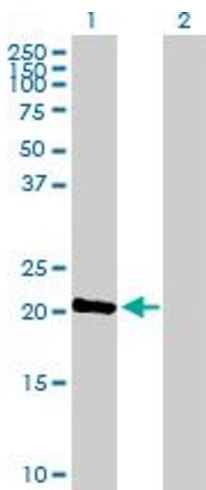
Application Details

| | |
|--------------------|--|
| Application Notes: | Optimal working dilution should be determined by the investigator. |
| Restrictions: | For Research Use only |

Handling

| | |
|------------------|--|
| Buffer: | In 1x PBS, pH 7.4 |
| Handling Advice: | Aliquot to avoid repeated freezing and thawing. |
| Storage: | -20 °C |
| Storage Comment: | Store at -20°C or lower. Aliquot to avoid repeated freezing and thawing. |

Images



Western Blotting

Image 1. Western Blot analysis of C1orf57 expression in transfected 293T cell line by C1orf57 MaxPab polyclonal antibody.

Lane 1: C1orf57 transfected lysate(20.9 kDa).

Lane 2: Non-transfected lysate.