



[Go to Product page](#)

Datasheet for ABIN529643

## anti-EFCAB2 antibody (AA 1-162)

### 2 Images

#### Overview

Quantity:	50 µg
Target:	EFCAB2
Binding Specificity:	AA 1-162
Reactivity:	Human
Host:	Mouse
Clonality:	Polyclonal
Conjugate:	This EFCAB2 antibody is un-conjugated
Application:	Western Blotting (WB)

#### Product Details

Purpose:	Mouse polyclonal antibody raised against a full-length human EFCAB2 protein.
Immunogen:	EFCAB2 (NP_115704, 1 a.a. ~ 162 a.a) full-length human protein.
Sequence:	MADEKDREEI IVAEFHKKIK EAFEVFDHES NNTVDVREIG TIIRSLGCCP TEGELHDLIA EVEEEEPTGY IRFEKFLPVM TEILLERKYR PIPEDVLLRA FEVLDSAKRG FLTKDELIKY MTEEGEPFSQ EEMEEMLSAA IDPESNSINY KDYITMMVID EN
Cross-Reactivity:	Human
Characteristics:	Antibody reactive against mammalian transfected lysate.

#### Target Details

Target:	EFCAB2
---------	--------

## Target Details

Alternative Name:	EFCAB2 ( <a href="#">EFCAB2 Products</a> )
Background:	Full Gene Name: EF-hand calcium binding domain 2 Synonyms: FLJ33608,MGC12458
Gene ID:	84288
NCBI Accession:	<a href="#">NM_032328</a>

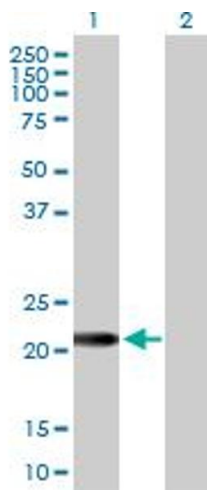
## Application Details

Application Notes:	Optimal working dilution should be determined by the investigator.
Restrictions:	For Research Use only

## Handling

Buffer:	In 1x PBS, pH 7.4
Handling Advice:	Aliquot to avoid repeated freezing and thawing.
Storage:	-20 °C
Storage Comment:	Store at -20°C or lower. Aliquot to avoid repeated freezing and thawing.

## Images

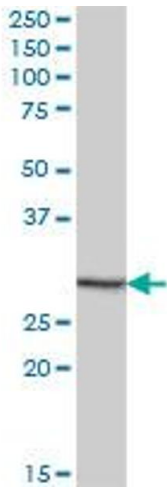


### Western Blotting

**Image 1.** Western Blot analysis of EFCAB2 expression in transfected 293T cell line by EFCAB2 MaxPab polyclonal antibody.

Lane 1: EFCAB2 transfected lysate(17.82 KDa).

Lane 2: Non-transfected lysate.



### Western Blotting

**Image 2.** EFCAB2 MaxPab polyclonal antibody. Western Blot analysis of EFCAB2 expression in human liver.