

Datasheet for ABIN529645
anti-MORG1 antibody (AA 1-315)



[Go to Product page](#)

2 Images

Overview

Quantity:	50 µg
Target:	MORG1 (wdr83)
Binding Specificity:	AA 1-315
Reactivity:	Human
Host:	Mouse
Clonality:	Polyclonal
Conjugate:	This MORG1 antibody is un-conjugated
Application:	Western Blotting (WB), Immunofluorescence (IF)

Product Details

Purpose:	Mouse polyclonal antibody raised against a full-length human MORG1 protein.
Immunogen:	MORG1 (NP_115708.1, 1 a.a. ~ 315 a.a) full-length human protein.
Sequence:	MAFPEPKPRP PELPQKRLKT LDCGQGAVRA VRFNVDGNYC LTCGSDKTLK LWNPLRGTLT RTYSGHGYEV LDAAGSFDNS SLCSGGGDKA VVLWDVASGQ VVRKFRGHAG KVNTVQFNEE ATVILSGSID SSIRCWDCRS RRPEPVQTLT EARDGVSSVK VSDHEILAGS VDGRVRRYDL RMGQLFSDYV GSPITCTCFS RDGQCTLVSS LDSTLRLLDK DTGELLGEYK GHKNQEYKLD CCLSERDTHV VSCSEDGKVF FWDLVEGALA LALPVGSGVV QSLAYHPTPEP CLLTAMGGSV QCWREEAYEA EDGAG
Cross-Reactivity:	Human
Characteristics:	Antibody reactive against mammalian transfected lysate.

Target Details

Target:	MORG1 (wdr83)
Alternative Name:	MORG1 (wdr83 Products)
Background:	Full Gene Name: mitogen-activated protein kinase organizer 1 Synonyms: MGC4238
Gene ID:	84292
NCBI Accession:	NM_032332

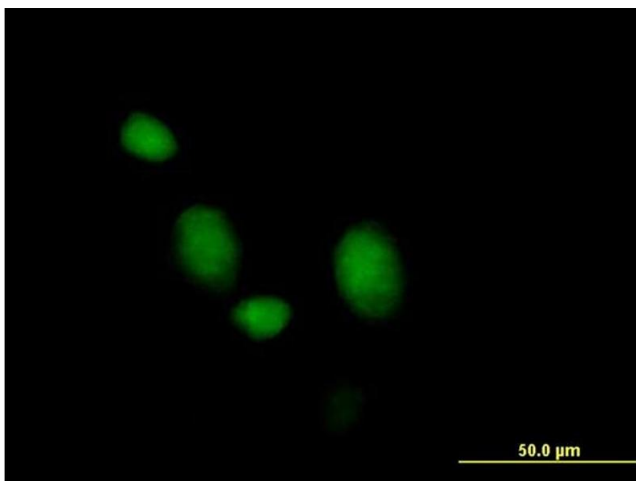
Application Details

Application Notes:	Optimal working dilution should be determined by the investigator.
Restrictions:	For Research Use only

Handling

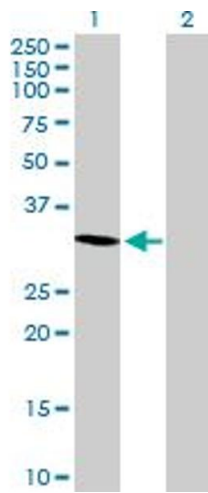
Buffer:	In 1x PBS, pH 7.4
Handling Advice:	Aliquot to avoid repeated freezing and thawing.
Storage:	-20 °C
Storage Comment:	Store at -20°C or lower. Aliquot to avoid repeated freezing and thawing.

Images



Immunofluorescence

Image 1. Immunofluorescence of purified MaxPab antibody to MORG1 on HeLa cell. [antibody concentration 10 ug/ml]



Western Blotting

Image 2. Western Blot analysis of MORG1 expression in transfected 293T cell line by MORG1 MaxPab polyclonal antibody.

Lane 1: MORG1 transfected lysate(34.65 KDa).

Lane 2: Non-transfected lysate.