

Datasheet for ABIN529659
anti-CCDC115 antibody (AA 1-180)



[Go to Product page](#)

2 Images

Overview

Quantity:	50 µg
Target:	CCDC115
Binding Specificity:	AA 1-180
Reactivity:	Human
Host:	Mouse
Clonality:	Polyclonal
Conjugate:	This CCDC115 antibody is un-conjugated
Application:	Western Blotting (WB), Immunofluorescence (IF)

Product Details

Purpose:	Mouse polyclonal antibody raised against a full-length human CCDC115 protein.
Immunogen:	CCDC115 (NP_115733.2, 1 a.a. ~ 180 a.a) full-length human protein.
Sequence:	MAALDLRAEL DSLVLQLLGD LEELEGKRTV LNARVEEGWL SLAKARYAMG AKSVGPLQYA SHMEPQVCLH ASEAQEGLQK FKVVVRAGVHA PEEVGPREG LRRRKGPTKT PEPESSEAPQ DPLNWFILV PHSLRQAQAS FRDGLQLAAD IASLQNRIDW GRSQRLGLQE KLIKLEPGAA
Cross-Reactivity:	Human
Characteristics:	Antibody reactive against mammalian transfected lysate.

Target Details

Target:	CCDC115
---------	---------

Target Details

Alternative Name:	CCDC115 (CCDC115 Products)
Background:	Full Gene Name: coiled-coil domain containing 115 Synonyms: FLJ30131,MGC12981,ccp1
Gene ID:	84317
NCBI Accession:	NM_032357

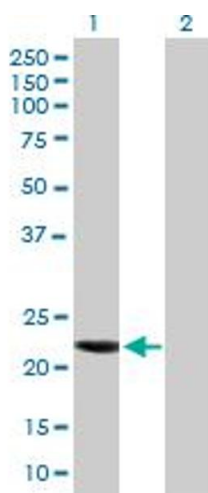
Application Details

Application Notes:	Optimal working dilution should be determined by the investigator.
Restrictions:	For Research Use only

Handling

Buffer:	In 1x PBS, pH 7.4
Handling Advice:	Aliquot to avoid repeated freezing and thawing.
Storage:	-20 °C
Storage Comment:	Store at -20°C or lower. Aliquot to avoid repeated freezing and thawing.

Images

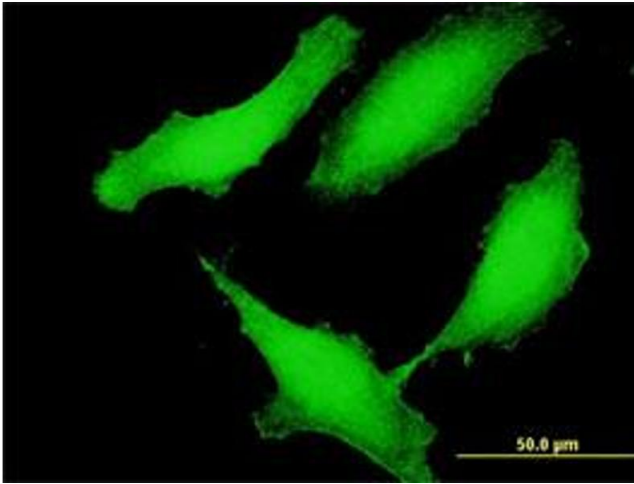


Western Blotting

Image 1. Western Blot analysis of CCDC115 expression in transfected 293T cell line by CCDC115 MaxPab polyclonal antibody.

Lane 1: MGC12981 transfected lysate(19.8 KDa).

Lane 2: Non-transfected lysate.



Immunofluorescence

Image 2. Immunofluorescence of purified MaxPab antibody to CCDC115 on HeLa cell. (antibody concentration 10 μ g/mL)