



[Go to Product page](#)

Datasheet for ABIN529688  
**anti-MAML2 antibody (AA 796-894)**

3 Images

Overview

Quantity:	100 µg
Target:	MAML2
Binding Specificity:	AA 796-894
Reactivity:	Human
Host:	Mouse
Clonality:	Monoclonal
Conjugate:	This MAML2 antibody is un-conjugated
Application:	Western Blotting (WB), ELISA

Product Details

Purpose:	Mouse monoclonal antibody raised against a partial recombinant MAML2.
Immunogen:	MAML2 (NP_115803, 796 a.a. ~ 894 a.a) partial recombinant protein with GST tag. MW of the GST tag alone is 26 KDa.
Sequence:	RPPPDYKDQR RNVGNMQPTA QYSGGSSTIS LNSNQALANP VSTHTILTPN SLLSTSHGT RMPSLSTAVQ NMGMYGNLPC NQPNTYSVTS GMNQLTQQR
Clone:	4A1
Isotype:	IgG2a
Cross-Reactivity:	Human
Characteristics:	Antibody Reactive Against Recombinant Protein.

## Target Details

Target:	MAML2
Alternative Name:	MAML2 ( <a href="#">MAML2 Products</a> )
Background:	Full Gene Name: mastermind-like 2 (Drosophila) Synonyms: DKFZp686N0150,KIAA1819,MAM-3,MAM2,MAM3,MGC176701,MLL-MAML2
Gene ID:	84441
NCBI Accession:	<a href="#">NM_032427</a>

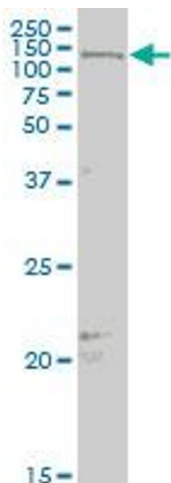
## Application Details

Application Notes:	Optimal working dilution should be determined by the investigator.
Restrictions:	For Research Use only

## Handling

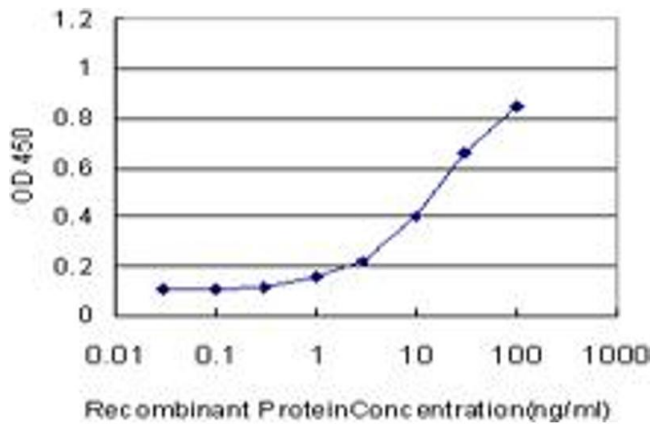
Buffer:	In 1x PBS, pH 7.4
Handling Advice:	Aliquot to avoid repeated freezing and thawing.
Storage:	-20 °C
Storage Comment:	Store at -20°C or lower. Aliquot to avoid repeated freezing and thawing.

## Images



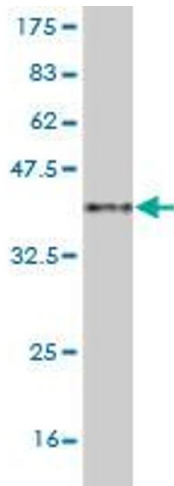
### Western Blotting

**Image 1.** MAML2 monoclonal antibody (M03), clone 4A1  
Western Blot analysis of MAML2 expression in MCF-7 .



### ELISA

**Image 2.** Detection limit for recombinant GST tagged MAML2 is approximately 1ng/ml as a capture antibody.



### Western Blotting

**Image 3.** Western Blot detection against Immunogen (36.63 kDa).