

Datasheet for ABIN529701
anti-GHDC antibody (AA 1-530)



[Go to Product page](#)

2 Images

Overview

Quantity:	50 µg
Target:	GHDC
Binding Specificity:	AA 1-530
Reactivity:	Human
Host:	Mouse
Clonality:	Polyclonal
Conjugate:	This GHDC antibody is un-conjugated
Application:	Western Blotting (WB)

Product Details

Purpose:	Mouse polyclonal antibody raised against a full-length human GHDC protein.
Immunogen:	GHDC (NP_115873.1, 1 a.a. ~ 530 a.a) full-length human protein.
Sequence:	<p>MLLWPLLLLL LLLPTLALLR QQRSQDARLS WLAGLQHRVA WGALVWAATW QRRRLEQSTL HVHQSQQAL RWCLQGAQRP HCSLRRSTDI STFRNHLPLT KASQTQQEDS GEQPLPPTS QDLGEASLQA TLLGLAALNK AYPEVLAQGR TARVTLTSPW PRPLPWPNGT LGQVGTGPK DPRALLLDAL RSPGLRALEA GTAVELLDVF LGLETDGEEL AGAIAAGNPG APLRERAEL REALEQGPRG LALRLWPKLQ VVTL DAGGQ AEAVAALGAL WCQGLAFFSP AYAASGGVLG LNLQPEQPHG LYLLPPGAPF IELLPVKEGT QEEAASLLL AEAQQGKEYE LVLTDRASLT RCRLGDVVRV VGAYNQCPVV RFICRLDQTL SVRGEDIGED LFSEALGRAV GQWAGAKLLD HGCVESSILD SSAGSAPHYE VFVALRGLRN LSEENRDKLD HCLQEASPRY KSLRFWGSVG PARVHLVGQG AFRALRAALA ACPSSPFPPA MPRVLRHRHL AQCLQERVVS</p>

Product Details

Cross-Reactivity:	Human
Characteristics:	Antibody reactive against mammalian transfected lysate.

Target Details

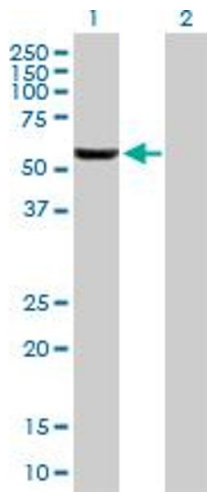
Target:	GHDC
Alternative Name:	GHDC (GHDC Products)
Background:	Full Gene Name: GH3 domain containing Synonyms: D11LGP1,LGP1
Gene ID:	84514
NCBI Accession:	NM_032484

Application Details

Application Notes:	Optimal working dilution should be determined by the investigator.
Restrictions:	For Research Use only

Handling

Buffer:	In 1x PBS, pH 7.4
Handling Advice:	Aliquot to avoid repeated freezing and thawing.
Storage:	-20 °C
Storage Comment:	Store at -20°C or lower. Aliquot to avoid repeated freezing and thawing.

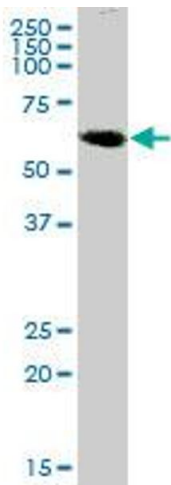


Western Blotting

Image 1. Western Blot analysis of GHDC expression in transfected 293T cell line by GHDC MaxPab polyclonal antibody.

Lane 1: LGP1 transfected lysate(58.3 KDa).

Lane 2: Non-transfected lysate.



Western Blotting

Image 2. LGP1 MaxPab polyclonal antibody. Western Blot analysis of LGP1 expression in human kidney.