

Datasheet for ABIN529702  
**anti-MCM8 antibody (AA 646-735)**



[Go to Product page](#)

2 Images

## Overview

Quantity:	100 µg
Target:	MCM8
Binding Specificity:	AA 646-735
Reactivity:	Human
Host:	Mouse
Clonality:	Monoclonal
Conjugate:	This MCM8 antibody is un-conjugated
Application:	Western Blotting (WB), ELISA

## Product Details

Purpose:	Mouse monoclonal antibody raised against a partial recombinant MCM8.
Immunogen:	MCM8 (AAH08830, 646 a.a. ~ 735 a.a) partial recombinant protein with GST tag. MW of the GST tag alone is 26 KDa.
Sequence:	TYSDEFGNLD FERSQHGSGM SNRSTAKRFI SALNNVAERT YNNIFQFHQL RQIAKELNIQ VADFENFIGS LNDQGYLLKK GPKVYQLQTM
Clone:	1F9
Isotype:	IgG1
Cross-Reactivity:	Human
Characteristics:	Antibody Reactive Against Recombinant Protein.

## Target Details

Target:	MCM8
Alternative Name:	MCM8 (MCM8 Products)
Background:	Full Gene Name: minichromosome maintenance complex component 8 Synonyms: C20orf154,MGC119522,MGC119523,MGC12866,MGC4816,REC,dJ967N21.5
Gene ID:	84515
Pathways:	Mitotic G1-G1/S Phases, DNA Replication, Synthesis of DNA

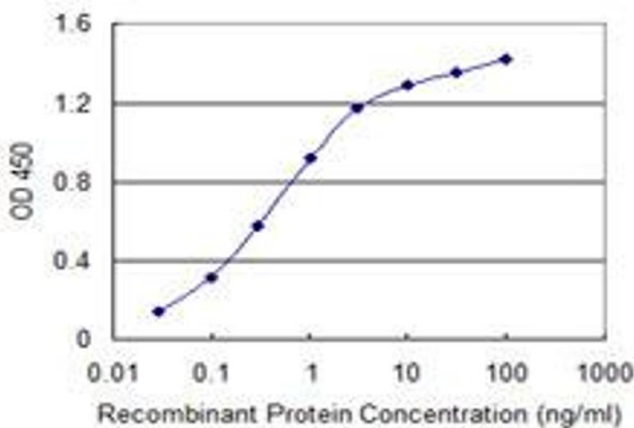
## Application Details

Application Notes:	Optimal working dilution should be determined by the investigator.
Restrictions:	For Research Use only

## Handling

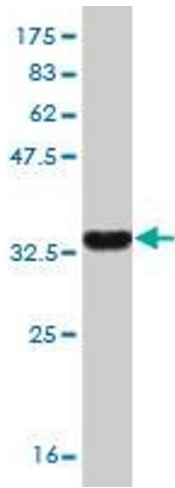
Buffer:	In 1x PBS, pH 7.4
Handling Advice:	Aliquot to avoid repeated freezing and thawing.
Storage:	-20 °C
Storage Comment:	Store at -20°C or lower. Aliquot to avoid repeated freezing and thawing.

## Images



### ELISA

**Image 1.** Detection limit for recombinant GST tagged MCM8 is 0.03 ng/ml as a capture antibody.



### Western Blotting

**Image 2.** Western Blot detection against Immunogen (35.53 kDa).