



Datasheet for ABIN529709  
**anti-RHOXF2 antibody (AA 1-288)**



[Go to Product page](#)

6 Images

## Overview

Quantity:	50 µg
Target:	RHOXF2
Binding Specificity:	AA 1-288
Reactivity:	Human
Host:	Mouse
Clonality:	Polyclonal
Conjugate:	This RHOXF2 antibody is un-conjugated
Application:	Western Blotting (WB), Immunofluorescence (IF)

## Product Details

Purpose:	Mouse polyclonal antibody raised against a full-length human RHOXF2 protein.
Immunogen:	RHOXF2 (AAH21719, 1 a.a. ~ 288 a.a) full-length human protein.
Sequence:	MEPPDQCSQY MTSLLSPAVID DEKELQDMNA MVLSLSTEEVK EEEEDAQPEP EQGTAAGEKL KSAGAQQGEE KDGGGEEKDG GGAGVPGHLW EGDLEGTSGS DGNVEDSDQS EKEPGQQYSR PRGAVGGLEP GNAQQPNVHA FTPLQLQELE RIFQREQFPS EFLRRRLARS MNVTElavQI WFENRRAKWR RHQRALMARN MLPFMAVGQP VMVTAAEAIT APLFISGMRD DYFWDHSHSS SLCFMPPFP PPSLPLPLML LPPMPPAGQA EFGPFPFVIV PSFTFPNV
Cross-Reactivity:	Human, Mouse, Rat
Characteristics:	Antibody reactive against mammalian transfected lysate.

## Target Details

Target:	RHOXF2
Alternative Name:	RHOXF2 ( <a href="#">RHOXF2 Products</a> )
Background:	Full Gene Name: Rhox homeobox family, member 2 Synonyms: PEPP-2,PEPP2,THG1
Gene ID:	84528

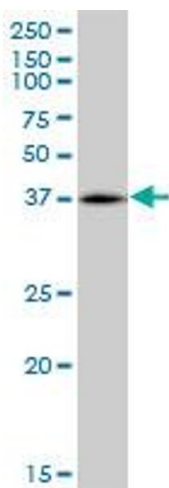
## Application Details

Application Notes:	Optimal working dilution should be determined by the investigator.
Restrictions:	For Research Use only

## Handling

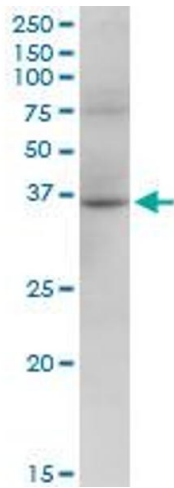
Buffer:	In 1x PBS, pH 7.4
Handling Advice:	Aliquot to avoid repeated freezing and thawing.
Storage:	-20 °C
Storage Comment:	Store at -20°C or lower. Aliquot to avoid repeated freezing and thawing.

## Images



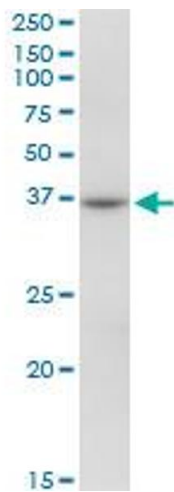
### Western Blotting

**Image 1.** PEPP-2 MaxPab polyclonal antibody. Western Blot analysis of PEPP-2 expression in K-562.



#### Western Blotting

**Image 2.** RHOXF2 MaxPab polyclonal antibody. Western Blot analysis of RHOXF2 expression in NIH/3T3.



#### Western Blotting

**Image 3.** RHOXF2 MaxPab polyclonal antibody. Western Blot analysis of RHOXF2 expression in Raw 264.7.

Please check the [product details page](#) for more images. Overall 6 images are available for ABIN529709.