



[Go to Product page](#)

Datasheet for ABIN529725

anti-Lysozyme-Like 1 antibody (AA 1-194)

2 Images

Overview

Quantity:	50 µg
Target:	Lysozyme-Like 1 (LYZL1)
Binding Specificity:	AA 1-194
Reactivity:	Human
Host:	Mouse
Clonality:	Polyclonal
Conjugate:	This Lysozyme-Like 1 antibody is un-conjugated
Application:	Western Blotting (WB)

Product Details

Purpose:	Mouse polyclonal antibody raised against a full-length human LYZL1 protein.
Immunogen:	LYZL1 (AAH21730.1, 1 a.a. ~ 194 a.a) full-length human protein.
Sequence:	MQDAPLSCLS PTRWSSVSSA DSTEKSASGA GTRNLPFQFC LRQALRMKAA GILTLIGCLV TGAESKIYTR CKLAKIFSRA GLDNYWGFSL GNWICMAYYE SGYNTTAPT V LDDGSIDYGI FQINSFAWCR RGKLENNHC HVACALITD DLTAICAR KIVKETQGMN YWQGWKKHCE GRDLSEWKKG CEVS
Cross-Reactivity:	Human
Characteristics:	Antibody reactive against mammalian transfected lysate.

Target Details

Target:	Lysozyme-Like 1 (LYZL1)
---------	-------------------------

Target Details

Alternative Name:	LYZL1 (LYZL1 Products)
Background:	Full Gene Name: lysozyme-like 1 Synonyms: KAAG648,LYC2,MGC33408,PRO1278,bA534G20.1
Gene ID:	84569

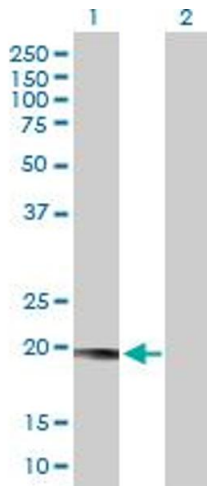
Application Details

Application Notes:	Optimal working dilution should be determined by the investigator.
Restrictions:	For Research Use only

Handling

Buffer:	In 1x PBS, pH 7.4
Handling Advice:	Aliquot to avoid repeated freezing and thawing.
Storage:	-20 °C
Storage Comment:	Store at -20°C or lower. Aliquot to avoid repeated freezing and thawing.

Images

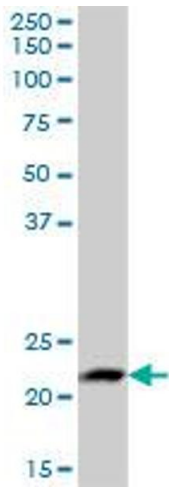


Western Blotting

Image 1. Western Blot analysis of LYZL1 expression in transfected 293T cell line by LYZL1 MaxPab polyclonal antibody.

Lane 1: LYZL1 transfected lysate(21.34 KDa).

Lane 2: Non-transfected lysate.



Western Blotting

Image 2. LYZL1 MaxPab polyclonal antibody. Western Blot analysis of LYZL1 expression in human kidney.