



[Go to Product page](#)

Datasheet for ABIN529727

## anti-COL25A1 antibody (AA 57-122)

### 2 Images

#### Overview

Quantity:	100 µg
Target:	COL25A1
Binding Specificity:	AA 57-122
Reactivity:	Human
Host:	Mouse
Clonality:	Monoclonal
Conjugate:	This COL25A1 antibody is un-conjugated
Application:	Western Blotting (WB), ELISA

#### Product Details

Purpose:	Mouse monoclonal antibody raised against a partial recombinant COL25A1.
Immunogen:	COL25A1 (NP_942014.1, 57 a.a. ~ 122 a.a) partial recombinant protein with GST tag. MW of the GST tag alone is 26 KDa.
Sequence:	NDLQARIAAL ESAKGAPSIH LLPDTLDHLK TMVQEKVERL LAQKSYEHMA KIRIAREAPS ECNCPA
Clone:	1D2
Isotype:	IgG2b
Cross-Reactivity:	Human
Characteristics:	Antibody Reactive Against Recombinant Protein.

## Target Details

Target:	COL25A1
Alternative Name:	COL25A1 ( <a href="#">COL25A1 Products</a> )
Background:	Full Gene Name: collagen, type XXV, alpha 1 Synonyms: CLAC,CLACP
Gene ID:	84570
NCBI Accession:	<a href="#">NM_198721</a>

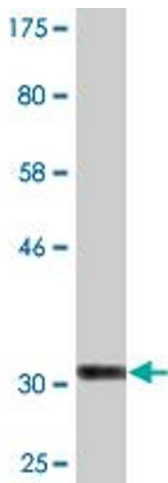
## Application Details

Application Notes:	Optimal working dilution should be determined by the investigator.
Restrictions:	For Research Use only

## Handling

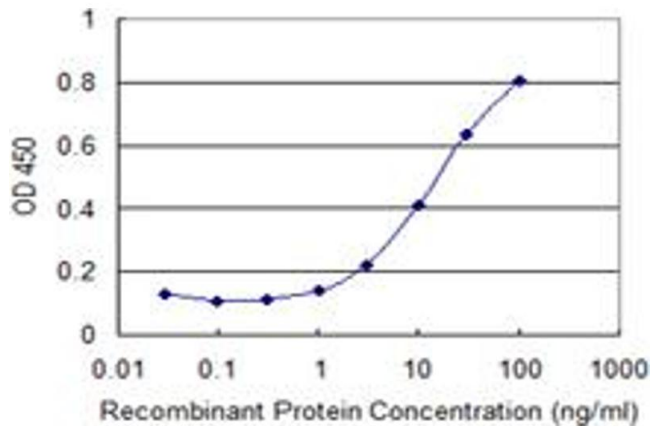
Buffer:	In 1x PBS, pH 7.4
Handling Advice:	Aliquot to avoid repeated freezing and thawing.
Storage:	-20 °C
Storage Comment:	Store at -20°C or lower. Aliquot to avoid repeated freezing and thawing.

## Images



### Western Blotting

**Image 1.** Western Blot detection against Immunogen (33 KDa) .



## ELISA

**Image 2.** Detection limit for recombinant GST tagged COL25A1 is 0.3 ng/ml as a capture antibody.