



[Go to Product page](#)

Datasheet for ABIN529732

anti-PARD6B antibody (AA 1-372)

2 Images

Overview

Quantity:	100 µg
Target:	PARD6B
Binding Specificity:	AA 1-372
Reactivity:	Human
Host:	Rabbit
Clonality:	Polyclonal
Conjugate:	This PARD6B antibody is un-conjugated
Application:	Western Blotting (WB)

Product Details

Purpose:	Rabbit polyclonal antibody raised against a full-length human PARD6B protein.
Immunogen:	PARD6B (NP_115910.1, 1 a.a. ~ 372 a.a) full-length human protein.
Sequence:	MNRSHRHGAG SGCLGTMVK SKFGAEFRF SLERSKPGKF EEFYGLLQHV HKIPNVDVLV GYADIHGDL PINDDNYHK AVSTANPLLR IFIQKKEAD YSAFGDTLI KKNVLTNVL RPDNHRKKPH IVISMPQDFR PVSSIIDVDI LPETHRRVRL YKYGTEKPLG FYIRDGSSVR VTPHGLEKVP GIFISRLVPG GLAQSTGLLA VNDEVLEVNG IEVSGKSLDQ VTDMMIANSR NLIITVRPAN QRNNVVRNSR TSGSSGQSTD NSLLGYPQI EPSFEPEDED SEEDDIIIED NGVPQQIPKA VPNTESLESL TQIELSFESG QNGFIPSNEV SLAAIASSN TEFETHAPDQ KLLLEEDGTII TL
Cross-Reactivity:	Human, Mouse
Characteristics:	Antibody reactive against mammalian transfected lysate.

Target Details

Target:	PARD6B
Alternative Name:	PARD6B (PARD6B Products)
Background:	Full Gene Name: par-6 partitioning defective 6 homolog beta (C. elegans) Synonyms: PAR6B
Gene ID:	84612
NCBI Accession:	NM_032521
Pathways:	Cell-Cell Junction Organization

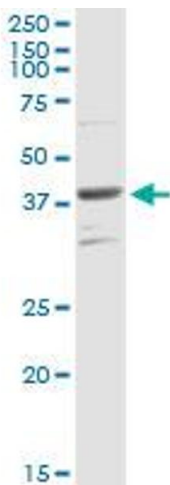
Application Details

Application Notes:	Optimal working dilution should be determined by the investigator.
Restrictions:	For Research Use only

Handling

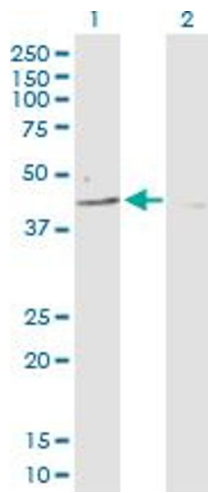
Buffer:	In 1x PBS, pH 7.4
Handling Advice:	Aliquot to avoid repeated freezing and thawing.
Storage:	-20 °C
Storage Comment:	Store at -20°C or lower. Aliquot to avoid repeated freezing and thawing.

Images



Western Blotting

Image 1. PARD6B MaxPab rabbit polyclonal antibody.
Western Blot analysis of PARD6B expression in mouse liver.



Western Blotting

Image 2. Western Blot analysis of PAR6B expression in transfected 293T cell line by PAR6B MaxPab polyclonal antibody.

Lane 1: PAR6B transfected lysate(41.20 kDa).

Lane 2: Non-transfected lysate.