



[Go to Product page](#)

Datasheet for ABIN529736

## anti-KIRREL3 antibody (AA 679-778)

### 2 Images

#### Overview

Quantity:	100 µg
Target:	KIRREL3
Binding Specificity:	AA 679-778
Reactivity:	Human
Host:	Mouse
Clonality:	Monoclonal
Conjugate:	This KIRREL3 antibody is un-conjugated
Application:	ELISA, Western Blotting (WB)

#### Product Details

Purpose:	Mouse monoclonal antibody raised against a partial recombinant KIRREL3.
Immunogen:	KIRREL3 (NP_115920.1, 679 a.a. ~ 778 a.a) partial recombinant protein with GST tag. MW of the GST tag alone is 26 KDa.
Sequence:	YSTLSGQGRL YDYGQRFVLG MGSSSIELCE REFQRGSLSD SSSFLDTQCD SSVSSSGKQD GYVQFDKASK ASASSSHHSQ SSSQNSDPSR PLQRRMQTHV
Clone:	3A12
Isotype:	IgG2a
Cross-Reactivity:	Human
Characteristics:	Antibody Reactive Against Recombinant Protein.

## Target Details

Target:	KIRREL3
Alternative Name:	KIRREL3 ( <a href="#">KIRREL3 Products</a> )
Background:	Full Gene Name: kin of IRRE like 3 (Drosophila) Synonyms: KIAA1867,KIRRE,MGC126824,MGC126850,NEPH2,PRO4502
Gene ID:	84623
NCBI Accession:	<a href="#">NM_032531</a>

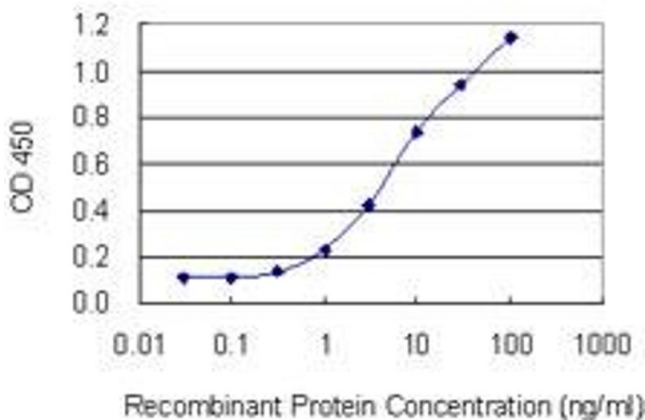
## Application Details

Application Notes:	Optimal working dilution should be determined by the investigator.
Restrictions:	For Research Use only

## Handling

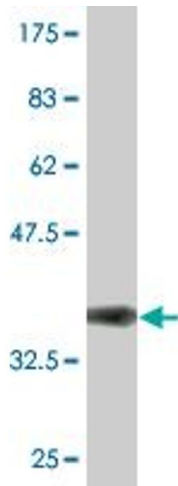
Buffer:	In 1x PBS, pH 7.4
Handling Advice:	Aliquot to avoid repeated freezing and thawing.
Storage:	-20 °C
Storage Comment:	Store at -20°C or lower. Aliquot to avoid repeated freezing and thawing.

## Images



### ELISA

**Image 1.** Detection limit for recombinant GST tagged KIRREL3 is 0.3 ng/ml as a capture antibody.



### Western Blotting

**Image 2.** Western Blot detection against Immunogen (36.74 kDa).