

Datasheet for ABIN529753
anti-MCEE antibody (AA 1-176)[Go to Product page](#)

1 Image

Overview

Quantity:	50 µg
Target:	MCEE
Binding Specificity:	AA 1-176
Reactivity:	Human
Host:	Mouse
Clonality:	Polyclonal
Conjugate:	This MCEE antibody is un-conjugated
Application:	Western Blotting (WB)

Product Details

Purpose:	Mouse polyclonal antibody raised against a full-length human MCEE protein.
Immunogen:	MCEE (NP_115990.2, 1 a.a. ~ 176 a.a) full-length human protein.
Sequence:	MARVLKAAAA NAVGLFSRLQ APIPTVRASS TSQPLDQVTG SVWNLGRLNH VAIAVPDLEK AAAFYKNILG AQVSEAVPLP EHGVSVVFN LGNTKMELLH PLGLDSPIAG FLQKNKAGGM HHICIEVDNI NAAVMDLKKK KIRSLSEEVK IGAHGKPVIF LHPKDCGGVL VELEQA
Cross-Reactivity:	Human
Characteristics:	Antibody reactive against mammalian transfected lysate.

Target Details

Target:	MCEE
---------	------

Target Details

Alternative Name:	MCEE (MCEE Products)
Background:	Full Gene Name: methylmalonyl CoA epimerase Synonyms: GLOD2
Gene ID:	84693
NCBI Accession:	NM_032601
Pathways:	Monocarboxylic Acid Catabolic Process

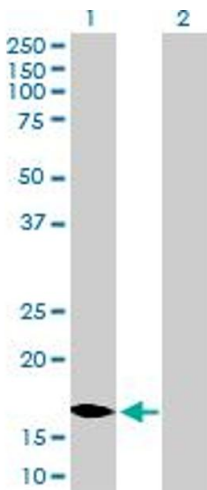
Application Details

Application Notes:	Optimal working dilution should be determined by the investigator.
Restrictions:	For Research Use only

Handling

Buffer:	In 1x PBS, pH 7.4
Handling Advice:	Aliquot to avoid repeated freezing and thawing.
Storage:	-20 °C
Storage Comment:	Store at -20°C or lower. Aliquot to avoid repeated freezing and thawing.

Images



Western Blotting

Image 1. Western Blot analysis of MCEE expression in transfected 293T cell line by MCEE MaxPab polyclonal antibody.

Lane 1: MCEE transfected lysate(19.36 KDa).

Lane 2: Non-transfected lysate.