



Datasheet for ABIN529754
anti-ABHD1 antibody (AA 1-405)



[Go to Product page](#)

1 Image

Overview

Quantity:	50 µg
Target:	ABHD1
Binding Specificity:	AA 1-405
Reactivity:	Human
Host:	Mouse
Clonality:	Polyclonal
Conjugate:	This ABHD1 antibody is un-conjugated
Application:	Western Blotting (WB)

Product Details

Purpose:	Mouse polyclonal antibody raised against a full-length human ABHD1 protein.
Immunogen:	ABHD1 (AAH39576.2, 1 a.a. ~ 405 a.a) full-length human protein.
Sequence:	MLSSFLSPQN GTWADTFSL LALAVALYLG YYWACVLQRP RLVAGPQFLA FLEPHCSITT ETFYPTLWCF EGRLQSIFQV LLQSQPLVLY QSDILQTPDG GQLLLDWAKQ PDSSQDPDPT TQPIVLLLPG ITGSSQETYV LHLVNQALRD GYQAVVFNNR GCRGEELRTH RAFCASNTED LETVNVHIKH RYPQAPLLAV GISFGGILVL NHLAQARQAA GLVAALTLA CWDSFETTRS LETPLNSLLF NQPLTAGLCQ LVERNRKVIE KVVVIDFVLQ ARTIRQFDER YTSVAFGYQD CVTTYKAASP RTKIDAIRIP VLYLSAADDP FSPVCALPIQ AAQHSPYVAL LITARGGHIG FLEGLLPWQH WYMSRLLHQY AKAIFQDPEG LPDLRALLPS EDRNS
Cross-Reactivity:	Human
Characteristics:	Antibody reactive against mammalian transfected lysate.

Target Details

Target:	ABHD1
Alternative Name:	ABHD1 (ABHD1 Products)
Background:	Full Gene Name: abhydrolase domain containing 1 Synonyms: FLJ36128,LABH1
Gene ID:	84696

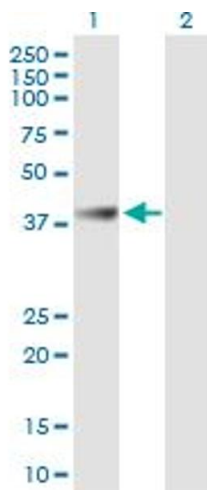
Application Details

Application Notes:	Optimal working dilution should be determined by the investigator.
Restrictions:	For Research Use only

Handling

Buffer:	In 1x PBS, pH 7.4
Handling Advice:	Aliquot to avoid repeated freezing and thawing.
Storage:	-20 °C
Storage Comment:	Store at -20°C or lower. Aliquot to avoid repeated freezing and thawing.

Images



Western Blotting

Image 1. Western Blot analysis of ABHD1 expression in transfected 293T cell line by ABHD1 MaxPab polyclonal antibody.

Lane 1: ABHD1 transfected lysate(44.55 KDa).

Lane 2: Non-transfected lysate.