



[Go to Product page](#)

Datasheet for ABIN529779
anti-TUBA1C antibody (AA 1-449)

1 Image

Overview

Quantity:	100 µg
Target:	TUBA1C
Binding Specificity:	AA 1-449
Reactivity:	Human
Host:	Rabbit
Clonality:	Polyclonal
Conjugate:	This TUBA1C antibody is un-conjugated
Application:	Western Blotting (WB)

Product Details

Purpose:	Rabbit polyclonal antibody raised against a full-length human TUBA1C protein.
Immunogen:	TUBA1C (NP_116093.1, 1 a.a. ~ 449 a.a) full-length human protein.
Sequence:	MRECISIHVG QAGVQIGNAC WELYCLEHGI QPDGQMPSDK TIGGGDDSFN TFFSETGAGK HVPRAVFVDL EPTVIDEVRT GTYRQLFHPE QLITGKEDAA NNYARGHYTI GKEIIDLVLD RIRKLADQCT GLQGFLVFHS FGGGTGSGFT SLLMERLSVD YGKKSLEFS IYPAPQVSTA VVEPYNSILT THTTLEHSDC AFMVDNEAIY DICRRNLIDIE RPTYTNLNL ISQIVSSITA SLRFDGALNV DLTEFQTNLV PYPRIHFPLA TYAPVISA EK AYHEQLTVAE ITNACFEPAN QMVKCDPRHG KYMACCLLYR GDVVPKDVNA AIATIKTKRT IQFVDWCPTG FKVGINYQPP TVVPGGDLAK VQRAVCMLSN TTAVAEAWAR LDHKFDLMYA KRAFVHWYVG EGMEEGEFSE AREDMAALEK DYEEVGADSA DGEDEGEEY
Cross-Reactivity:	Human

Product Details

Characteristics: Antibody reactive against mammalian transfected lysate.

Target Details

Target: TUBA1C

Alternative Name: TUBA1C ([TUBA1C Products](#))

Background: Full Gene Name: tubulin, alpha 1c
Synonyms: MGC10851,MGC14580,TUBA6,bcm948

Gene ID: 84790

NCBI Accession: [NM_032704](#)

Pathways: [Microtubule Dynamics, M Phase](#)

Application Details

Application Notes: Optimal working dilution should be determined by the investigator.

Restrictions: For Research Use only

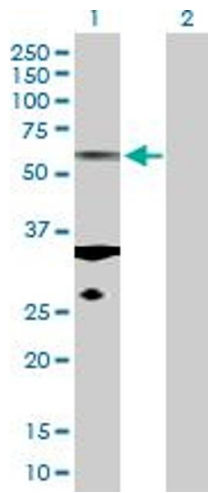
Handling

Buffer: In 1x PBS, pH 7.4

Handling Advice: Aliquot to avoid repeated freezing and thawing.

Storage: -20 °C

Storage Comment: Store at -20°C or lower. Aliquot to avoid repeated freezing and thawing.



Western Blotting

Image 1. Western Blot analysis of TUBA1C expression in transfected 293T cell line by TUBA1C MaxPab polyclonal antibody.

Lane 1: TUBA1C transfected lysate(49.90 KDa).

Lane 2: Non-transfected lysate.