



[Go to Product page](#)

Datasheet for ABIN529797

anti-LRCH3 antibody (AA 1-712)

1 Image

Overview

Quantity:	50 µg
Target:	LRCH3
Binding Specificity:	AA 1-712
Reactivity:	Human
Host:	Mouse
Clonality:	Polyclonal
Conjugate:	This LRCH3 antibody is un-conjugated
Application:	Western Blotting (WB)

Product Details

Purpose:	Mouse polyclonal antibody raised against a full-length human LRCH3 protein.
Immunogen:	LRCH3 (NP_116162, 1 a.a. ~ 712 a.a) full-length human protein.
Sequence:	MAAAGLVAVA AAAEYSGTVA SGGNLPGVHC GPSSGAGPGF GPGSWSRSLD RALEEAAVTG VLSLSGRKLR EFPRGAANHD LTDTRADLS RNRLSEIPIE ACHFVLENL NLYQNCIRYI PEAILNLQAL TFLNISRNL STLPVHLCNL PLKVLIASNN KLVSLPEEIG HLRHLMELDV SCNEIQTIPS QIGNLEALRD LNVRNHLVH LPEELAEPL IRLDFSCNKI TTIPVCYRNL RHLQTITLDN NPLQSPAQI CIKGVHIFK YLNIQACKIA PDLDPYDRRP LGFGSCHEEL YSSRPYGALD SGFNSVDSGD KRWSGNEPTD EFSDLPLRVA EITKEQLRR ESQYQENRGS LVVTNGGVEH DLDQIDYIDS CTAEEEEAEV RQPKGPDPS LSSQFMAYIE QRRISHEGSP VKPVAIREFQ KTEDMRRYLH QNRVPAEPSS LLSLSASHNQ LSHTDLELHQ RREQLVERTR REAQLAALQY EEEKIRTKQI QRDAVLDFVK QKASQSPQKQ HPLLDGVDGE CPFPSRRSQH TDDSALCMSL SGLNQVGCAA TLPHSSAFTP LKSDDRPNAL LSSPATETVH HSPAYSFPAA

Product Details

IQRNQPQRPE SFLFRAGVRA ETNKGHASPL PPSAAPT TDS TDSITGQNSR QREEELELID
QLRKHIEYRL KVSLPCDLGA ALTDGVVLCH LANHVRPRSV PSIHVPSPAV VS

Cross-Reactivity: Human

Characteristics: Antibody reactive against mammalian transfected lysate.

Target Details

Target: LRCH3

Alternative Name: LRCH3 ([LRCH3 Products](#))

Background: Full Gene Name: leucine-rich repeats and calponin homology (CH) domain containing 3
Synonyms: FLJ20994,FLJ43245,FLJ44976,MGC4126

Gene ID: 84859

NCBI Accession: [NM_032773](#)

Application Details

Application Notes: Optimal working dilution should be determined by the investigator.

Restrictions: For Research Use only

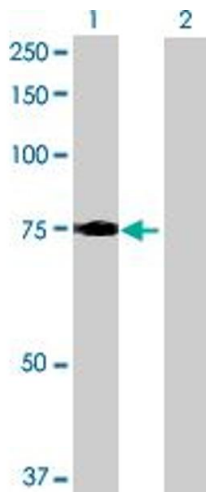
Handling

Buffer: In 1x PBS, pH 7.4

Handling Advice: Aliquot to avoid repeated freezing and thawing.

Storage: -20 °C

Storage Comment: Store at -20°C or lower. Aliquot to avoid repeated freezing and thawing.



Western Blotting

Image 1. Western Blot analysis of LRCH3 expression in transfected 293T cell line by LRCH3 MaxPab polyclonal antibody.

Lane 1: LRCH3 transfected lysate(78.32 KDa).

Lane 2: Non-transfected lysate.