



[Go to Product page](#)

Datasheet for ABIN529876

anti-ABCC11 antibody (AA 1-553)

2 Images

Overview

Quantity:	50 µg
Target:	ABCC11
Binding Specificity:	AA 1-553
Reactivity:	Human
Host:	Mouse
Clonality:	Polyclonal
Conjugate:	This ABCC11 antibody is un-conjugated
Application:	Western Blotting (WB)

Product Details

Purpose:	Mouse polyclonal antibody raised against a full-length human ABCC11 protein.
Immunogen:	ABCC11 (AAH39085, 1 a.a. ~ 553 a.a) full-length human protein.
Sequence:	MTRKRTYWVP NSSGGLVNRG IDIGDDMVSG LIYKTYTLQD GPWSQQERNP EAPGRAAVPP WGKYDAALRT MIPFRPKPRF PAPQPLDNAG LFSYLTVSWL TPLMIQSLRS RLDENTIPPL SVHDASDKNV QRLHRLWEEE VSRRGIEKAS VLLVMLRFQR TRLIFDALLG ICFCIASVLG PILIIPKILE YSEEQ LGNVV HGVGLCFALF LSECVKLSLF SSSWIINQRT AIRFRAAVSS FAFEKLIQFK SVIHITSGEA ISFFTGDVNY LFEGVCYGPL VLITCASLVI CSISSYFIIG YTAFIAILCY LLVFPLAVFM TRMAVKAQHH TSEVSDQRIR VTSEVLTCIK LIKMYTWEKP FAKIIEDLRR KERKLEKCG LVQSLTSITL FIIPTVATAV WLIHTSLKL KLTASMAFSM LASLNLLRLS VFFVPIAVKG LTNSKSAVMR FKKFFLQESP VFYVQTLQDP SKALVFEEAT LSWQQTCPGI VNGALELERN GHASEGMTRP RDALGPEEEG NSLGPELHKI NLVSKVALF RPRRQASCQA LRT

Product Details

Cross-Reactivity:	Human
Characteristics:	Antibody reactive against mammalian transfected lysate.

Target Details

Target:	ABCC11
Alternative Name:	ABCC11 (ABCC11 Products)
Background:	Full Gene Name: ATP-binding cassette, sub-family C (CFTR/MRP), member 11 Synonyms: EWWD,MRP8,WW
Gene ID:	85320

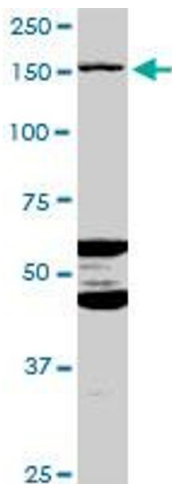
Application Details

Application Notes:	Optimal working dilution should be determined by the investigator.
Restrictions:	For Research Use only

Handling

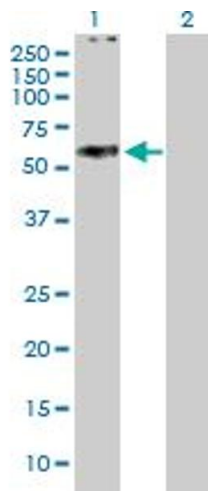
Buffer:	In 1x PBS, pH 7.4
Handling Advice:	Aliquot to avoid repeated freezing and thawing.
Storage:	-20 °C
Storage Comment:	Store at -20°C or lower. Aliquot to avoid repeated freezing and thawing.

Images



Western Blotting

Image 1. ABCC11 MaxPab polyclonal antibody. Western Blot analysis of ABCC11 expression in HepG2.



Western Blotting

Image 2. Western Blot analysis of ABCC11 expression in transfected 293T cell line by ABCC11 MaxPab polyclonal antibody.

Lane 1: ABCC11 transfected lysate(60.83 KDa).

Lane 2: Non-transfected lysate.