



[Go to Product page](#)

Datasheet for ABIN529913
anti-LBX2 antibody (AA 95-194)

4 Images

Overview

Quantity:	100 µg
Target:	LBX2
Binding Specificity:	AA 95-194
Reactivity:	Human
Host:	Mouse
Clonality:	Monoclonal
Conjugate:	This LBX2 antibody is un-conjugated
Application:	Western Blotting (WB), ELISA, Immunofluorescence (IF)

Product Details

Purpose:	Mouse monoclonal antibody raised against a partial recombinant LBX2.
Immunogen:	LBX2 (NP_001009812.1, 95 a.a. ~ 194 a.a) partial recombinant protein with GST tag. MW of the GST tag alone is 26 KDa.
Sequence:	ELERRFVFQK YLAPSERDGL ATRLGLANAQ VVTWFQNRRA KLKRDVEEMR ADVASLRALS PEVLCSLALP EGAPDPGLCL GPAGPDSRPH LSDEEIQVDD
Clone:	3A5
Isotype:	IgG2a
Cross-Reactivity:	Human
Characteristics:	Antibody Reactive Against Recombinant Protein.

Target Details

Target:	LBX2
Alternative Name:	LBX2 (LBX2 Products)
Background:	Full Gene Name: ladybird homeobox 2 Synonyms: LP3727
Gene ID:	85474
NCBI Accession:	NM_001009812

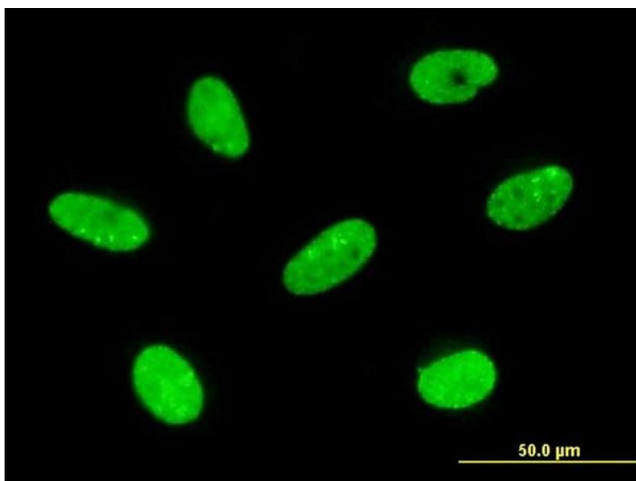
Application Details

Application Notes:	Optimal working dilution should be determined by the investigator.
Restrictions:	For Research Use only

Handling

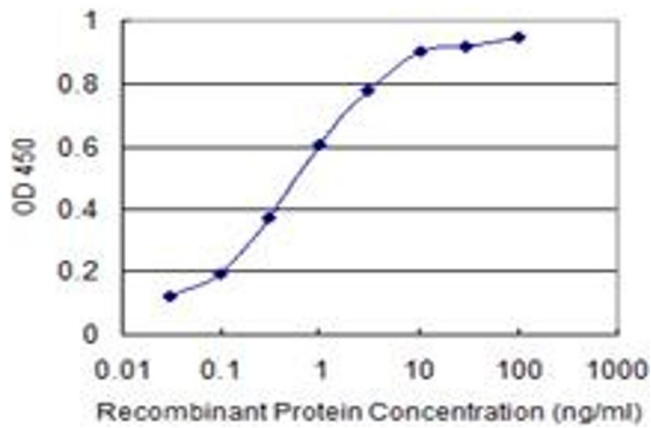
Buffer:	In 1x PBS, pH 7.4
Handling Advice:	Aliquot to avoid repeated freezing and thawing.
Storage:	-20 °C
Storage Comment:	Store at -20°C or lower. Aliquot to avoid repeated freezing and thawing.

Images



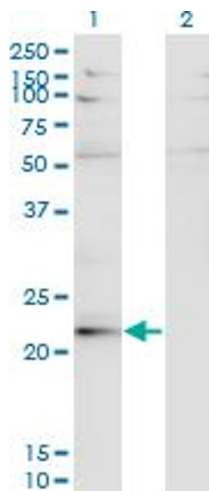
Immunofluorescence

Image 1. Immunofluorescence of monoclonal antibody to LBX2 on HeLa cell. [antibody concentration 10 ug/ml]



ELISA

Image 2. Detection limit for recombinant GST tagged LBX2 is 0.03 ng/ml as a capture antibody.



Western Blotting

Image 3. Western Blot analysis of LBX2 expression in transfected 293T cell line by LBX2 monoclonal antibody (M02), clone 3A5.

Lane 1: LBX2 transfected lysate (Predicted MW: 21.4 kDa).

Lane 2: Non-transfected lysate.

Please check the [product details page](#) for more images. Overall 4 images are available for ABIN529913.