



[Go to Product page](#)

Datasheet for ABIN529917
anti-MBD3L1 antibody (AA 1-194)

1 Image

Overview

Quantity:	50 µg
Target:	MBD3L1
Binding Specificity:	AA 1-194
Reactivity:	Human
Host:	Mouse
Clonality:	Polyclonal
Conjugate:	This MBD3L1 antibody is un-conjugated
Application:	Western Blotting (WB)

Product Details

Purpose:	Mouse polyclonal antibody raised against a full-length human MBD3L1 protein.
Immunogen:	MBD3L1 (NP_660209.1, 1 a.a. ~ 194 a.a) full-length human protein.
Sequence:	MAKSSQRKQR DCVNQCKSKP GLSTSIPLRM SSYTFKRPVT RITPHPGNEV RYHQWEESLE KPQQVCWQRR LQGLQAYSSA GELSSTDLA NTLQKLVPSY TGGSLLEDA SGLEHSCPMP HLACSSDAVE IIPAEGVGIS QLLCKQFLVT EEDIRKQEGK VKTVRERLAI ALIADGLANE AEKVRDQEGC PEKR
Cross-Reactivity:	Human
Characteristics:	Antibody reactive against mammalian transfected lysate.

Target Details

Target:	MBD3L1
---------	--------

Target Details

Alternative Name:	MBD3L1 (MBD3L1 Products)
Background:	Full Gene Name: methyl-CpG binding domain protein 3-like 1 Synonyms: MBD3L,MGC138263,MGC138269
Gene ID:	85509
NCBI Accession:	NM_145208

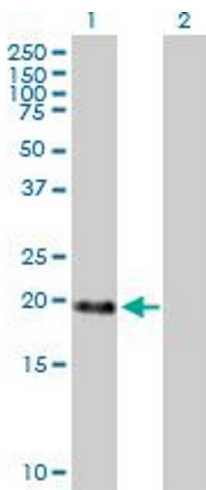
Application Details

Application Notes:	Optimal working dilution should be determined by the investigator.
Restrictions:	For Research Use only

Handling

Buffer:	In 1x PBS, pH 7.4
Handling Advice:	Aliquot to avoid repeated freezing and thawing.
Storage:	-20 °C
Storage Comment:	Store at -20°C or lower. Aliquot to avoid repeated freezing and thawing.

Images



Western Blotting

Image 1. Western Blot analysis of MBD3L1 expression in transfected 293T cell line by MBD3L1 MaxPab polyclonal antibody.

Lane 1: MBD3L1 transfected lysate(21.34 KDa).

Lane 2: Non-transfected lysate.