

Datasheet for ABIN529937  
**anti-FCHSD1 antibody (AA 1-409)**



[Go to Product page](#)

2 Images

Overview

Quantity:	50 µg
Target:	FCHSD1
Binding Specificity:	AA 1-409
Reactivity:	Human
Host:	Mouse
Clonality:	Polyclonal
Conjugate:	This FCHSD1 antibody is un-conjugated
Application:	Western Blotting (WB)

Product Details

Purpose:	Mouse polyclonal antibody raised against a full-length human FCHSD1 protein.
Immunogen:	FCHSD1 (AAH47016.1, 1 a.a. ~ 409 a.a) full-length human protein.
Sequence:	MDSRTVFGAW RCLLDATVAG GQTRLQASDR YRDLAGGTGR SAKEQVLRKG TENLQRAQAE VLQSVRELSR SRKLYGQRRER VWALAQEKAA DVQARLNRSR HGIFHSRTSL QKLSTKLSAQ SAQYSQQLQA ARNEYLLNLV ATNAHLDHYY QEELPALLKA LVSELSEHLR DPLTSLSHTE LEAAEVILEH AHRGEQTTSQ VSWEQDLKLF LQEPGVFSPT PPQQFQPAGT DQVCVLEWGA EGVAGKSGLE KEVQRLTSRA ARDYKIQNHG HRVLQRLEQR RQQASEREAP SIEQRLQEV ESIRRAQVSQ VKGAARLALL QGAGLDVERW LKPAMTQAQD EVEQERRLSE ARLSQRDLSP TAEDAELSDF EECEETGELF EEPAPQALAT RALPCPAHV VFRYQGV RMS
Cross-Reactivity:	Human
Characteristics:	Antibody reactive against mammalian transfected lysate.

## Target Details

Target:	FCHSD1
Alternative Name:	FCHSD1 ( <a href="#">FCHSD1 Products</a> )
Background:	Full Gene Name: FCH and double SH3 domains 1 Synonyms: FLJ00007,NWK2
Gene ID:	89848

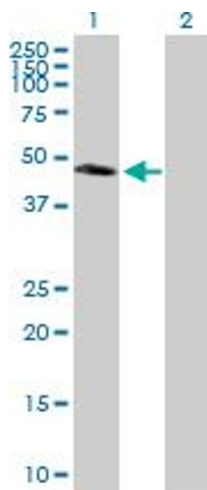
## Application Details

Application Notes:	Optimal working dilution should be determined by the investigator.
Restrictions:	For Research Use only

## Handling

Buffer:	In 1x PBS, pH 7.4
Handling Advice:	Aliquot to avoid repeated freezing and thawing.
Storage:	-20 °C
Storage Comment:	Store at -20°C or lower. Aliquot to avoid repeated freezing and thawing.

## Images

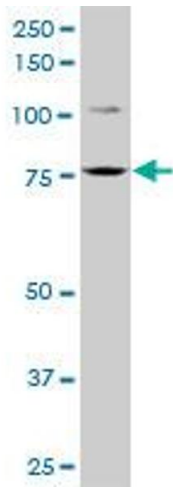


### Western Blotting

**Image 1.** Western Blot analysis of FCHSD1 expression in transfected 293T cell line by FCHSD1 MaxPab polyclonal antibody.

Lane 1: FCHSD1 transfected lysate(44.99 kDa).

Lane 2: Non-transfected lysate.



### Western Blotting

**Image 2.** FCHSD1 MaxPab polyclonal antibody. Western Blot analysis of FCHSD1 expression in Y-79.