



[Go to Product page](#)

Datasheet for ABIN529938
anti-SIGLEC12 antibody (AA 1-595)

1 Image

Overview

Quantity:	50 µL
Target:	SIGLEC12
Binding Specificity:	AA 1-595
Reactivity:	Human
Host:	Mouse
Clonality:	Polyclonal
Conjugate:	This SIGLEC12 antibody is un-conjugated
Application:	Western Blotting (WB)

Product Details

Purpose:	Mouse polyclonal antibody raised against a full-length human SIGLEC12 protein.
Immunogen:	SIGLEC12 (NP_443729.1, 1 a.a. ~ 595 a.a) full-length human protein.
Sequence:	MLLLLLLLPP LLCGRVGAKE QKDYLLTMQK SVTVQEGLCV SVLCSFSYPQ NGWTASDPVH GYWFRAGDHV SRNIPVATNN PARAVQEETR DRFHLLGDPQ NKDCTLSIRD TRES DAGTYV FCVERGNMKW NYKYDQLSVN VTASQDLLSR YRLEVPE SVT VQEGLCVSVP CSVLYPHYNW TASSPVYGSW FKEGADIPWD IPVATNTPSG KVQEDTHGRF LLLGDPQTNN CSLSIRDARK GDSGKYYFQV ERGSRKWN YI YDKLSVHVTA LTHMPTFSIP GTLES GHPRN LTC SVPWACE QGTPTITWM GASVSSLDPT ITRSSMLSLI PQPQDHGTSL TCQVTLPGAG VTMTRAVRLN ISYPPQNLTM TVFQGDGTAS TTLRNGSALS VLEGQSLHLV CAVDSNPPAR LSWTWGSLTL SPSQSSNLGV LELPRVHVKD EGEFTCRAQN PLGSQHISLS LSLQNEYTGK MRPISGVTLG AFGGAGATAL VFLYFCIIFV VVRSCRK KSA RPAVGVGDTG MEDANAVRGS ASQGPIESP ADDSPPHHAP PALATPSPEE GEIQYASLSF HKARPQYPQE QEAIGYEYSE INIPK

Product Details

Cross-Reactivity:	Human
Characteristics:	Antibody reactive against mammalian transfected lysate.

Target Details

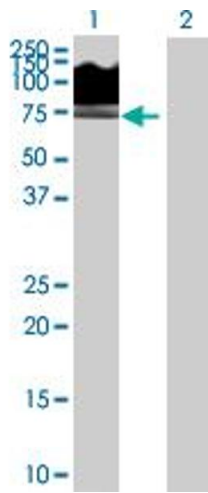
Target:	SIGLEC12
Alternative Name:	SIGLEC12 (SIGLEC12 Products)
Background:	Full Gene Name: sialic acid binding Ig-like lectin 12 Synonyms: FLJ38600,S2V,SIGLECL1,SLG,Siglec-12,Siglec-L1,Siglec-XII
Gene ID:	89858
NCBI Accession:	NM_053003

Application Details

Application Notes:	Optimal working dilution should be determined by the investigator.
Restrictions:	For Research Use only

Handling

Format:	Liquid
Buffer:	No additive
Preservative:	Without preservative
Handling Advice:	Aliquot to avoid repeated freezing and thawing.
Storage:	-20 °C
Storage Comment:	Store at -20°C or lower. Aliquot to avoid repeated freezing and thawing.



Western Blotting

Image 1. Western Blot analysis of SIGLEC12 expression in transfected 293T cell line by SIGLEC12 MaxPab polyclonal antibody.

Lane 1: SIGLEC12 transfected lysate(65.45 KDa).

Lane 2: Non-transfected lysate.