

Datasheet for ABIN529973
anti-KIR3DX1 antibody (AA 1-78)[Go to Product page](#)

1 Image

Overview

Quantity:	50 µg
Target:	KIR3DX1
Binding Specificity:	AA 1-78
Reactivity:	Human
Host:	Mouse
Clonality:	Polyclonal
Conjugate:	This KIR3DX1 antibody is un-conjugated
Application:	Western Blotting (WB)

Product Details

Purpose:	Mouse polyclonal antibody raised against a full-length human KIR3DX1 protein.
Immunogen:	KIR3DX1 (AAH33195.1, 1 a.a. ~ 78 a.a) full-length human protein.
Sequence:	MANTEPTEGQ RTDEEEPAAE ETQEIIYAQL NHQALSQTGF PPASQCPhYL SEDPSIYITV HQAQAEARAA PSLWHKGH
Cross-Reactivity:	Human
Characteristics:	Antibody reactive against mammalian transfected lysate.

Target Details

Target:	KIR3DX1
Alternative Name:	KIR3DX1 (KIR3DX1 Products)

Target Details

Background:	Full Gene Name: killer cell immunoglobulin-like receptor, three domains, X1 Synonyms: FLJ00060,KIR3DL0,LENG12
Gene ID:	90011

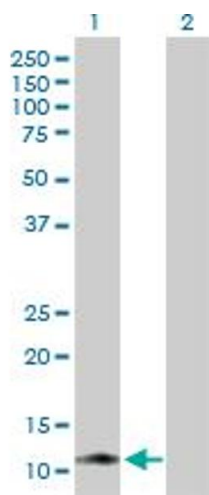
Application Details

Application Notes:	Optimal working dilution should be determined by the investigator.
Restrictions:	For Research Use only

Handling

Buffer:	In 1x PBS, pH 7.4
Handling Advice:	Aliquot to avoid repeated freezing and thawing.
Storage:	-20 °C
Storage Comment:	Store at -20°C or lower. Aliquot to avoid repeated freezing and thawing.

Images



Western Blotting

Image 1. Western Blot analysis of KIR3DX1 expression in transfected 293T cell line by KIR3DX1 MaxPab polyclonal antibody.

Lane 1: FLJ00060 transfected lysate(8.58 KDa).

Lane 2: Non-transfected lysate.