



[Go to Product page](#)

Datasheet for ABIN530009

## anti-CCDC126 antibody (AA 1-140)

### 2 Images

#### Overview

Quantity:	50 µg
Target:	CCDC126
Binding Specificity:	AA 1-140
Reactivity:	Human
Host:	Mouse
Clonality:	Polyclonal
Conjugate:	This CCDC126 antibody is un-conjugated
Application:	Western Blotting (WB)

#### Product Details

Purpose:	Mouse polyclonal antibody raised against a full-length human CCDC126 protein.
Immunogen:	CCDC126 (NP_620126.2, 1 a.a. ~ 140 a.a) full-length human protein.
Sequence:	MFFTISRKNM SQKLSLLLLV FGLIWGLMLL HYTFQQRHQ SSVKLREQIL DLSKRYVKAL AEENKNTVDV ENGASMAGYA DLKRTIAVLL DDILQRLVKL ENKVDYIVVN GSAANTTNGT SGNLVPVTTN KRTNVSGSIR
Cross-Reactivity:	Human
Characteristics:	Antibody reactive against mammalian transfected lysate.

#### Target Details

Target:	CCDC126
---------	---------

## Target Details

Alternative Name:	CCDC126 ( <a href="#">CCDC126 Products</a> )
Background:	Full Gene Name: coiled-coil domain containing 126 Synonyms: FLJ23031,MGC104248
Gene ID:	90693
NCBI Accession:	<a href="#">NM_138771</a>

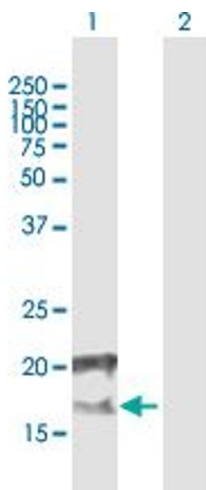
## Application Details

Application Notes:	Optimal working dilution should be determined by the investigator.
Restrictions:	For Research Use only

## Handling

Buffer:	In 1x PBS, pH 7.4
Handling Advice:	Aliquot to avoid repeated freezing and thawing.
Storage:	-20 °C
Storage Comment:	Store at -20°C or lower. Aliquot to avoid repeated freezing and thawing.

## Images

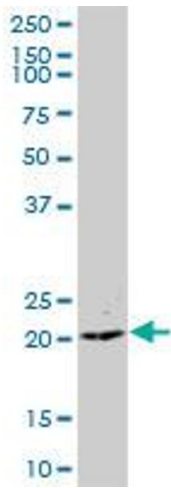


### Western Blotting

**Image 1.** Western Blot analysis of CCDC126 expression in transfected 293T cell line by CCDC126 MaxPab polyclonal antibody.

Lane 1: CCDC126 transfected lysate(15.4 KDa).

Lane 2: Non-transfected lysate.



### Western Blotting

**Image 2.** CCDC126 MaxPab polyclonal antibody. Western Blot analysis of CCDC126 expression in human placenta.