



[Go to Product page](#)

Datasheet for ABIN530014
anti-HN1L antibody (AA 1-190)

3 Images

Overview

Quantity:	50 µg
Target:	HN1L
Binding Specificity:	AA 1-190
Reactivity:	Human
Host:	Mouse
Clonality:	Polyclonal
Conjugate:	This HN1L antibody is un-conjugated
Application:	Western Blotting (WB), Immunofluorescence (IF)

Product Details

Purpose:	Mouse polyclonal antibody raised against a full-length human HN1L protein.
Immunogen:	HN1L (NP_653171.1, 1 a.a. ~ 190 a.a) full-length human protein.
Sequence:	MFQVPDSEGG RAGSRAMKPP GGESSNLFSG PEEATPSSRP NRMASNIFGP TEEPQNIPKR TNPPGGKGS IFDESTPVQT RQHLNPPGGK TSDIFGSPVT ATSLAHPNK PKDHVFLCEG EEPKSDLKAA RSIPAGAEPG EKGSARKAGP AKEQEMPTV DSHEPRLGPR PRSHNKVLNP PGGKSSISFY
Cross-Reactivity:	Human
Characteristics:	Antibody reactive against mammalian transfected lysate.

Target Details

Target:	HN1L
---------	------

Target Details

Alternative Name:	HN1L (HN1L Products)
Background:	Full Gene Name: hematological and neurological expressed 1-like Synonyms: C16orf34,FLJ13092,KIAA1426,L11
Gene ID:	90861
NCBI Accession:	NM_144570

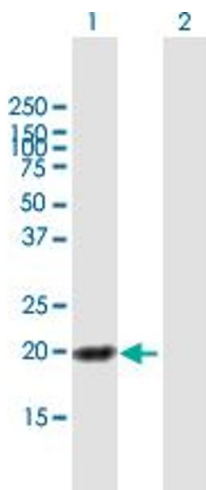
Application Details

Application Notes:	Optimal working dilution should be determined by the investigator.
Restrictions:	For Research Use only

Handling

Buffer:	In 1x PBS, pH 7.4
Handling Advice:	Aliquot to avoid repeated freezing and thawing.
Storage:	-20 °C
Storage Comment:	Store at -20°C or lower. Aliquot to avoid repeated freezing and thawing.

Images

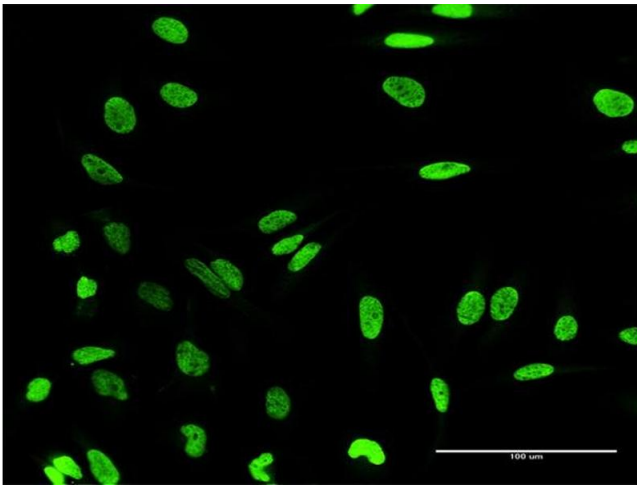


Western Blotting

Image 1. Western Blot analysis of HN1L expression in transfected 293T cell line by HN1L MaxPab polyclonal antibody.

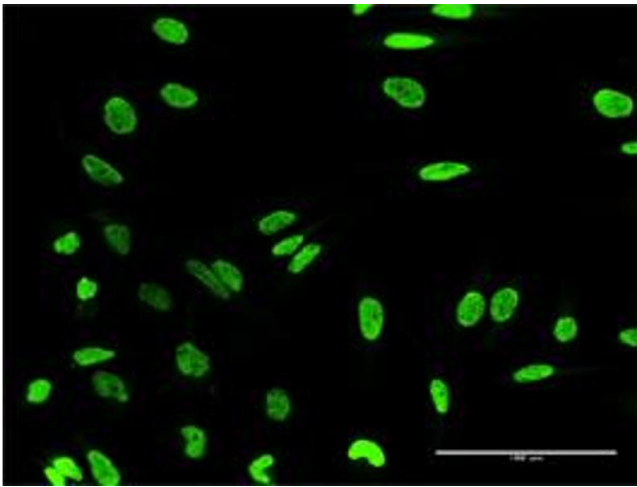
Lane 1: HN1L transfected lysate(20.10 kDa).

Lane 2: Non-transfected lysate.



Immunofluorescence

Image 2. Immunofluorescence of purified MaxPab antibody to HN1L on HeLa cell. [antibody concentration 10 μg/ml]



Immunofluorescence

Image 3. Immunofluorescence of purified MaxPab antibody to HN1L on HeLa cell. (antibody concentration 10 μg/mL)