



[Go to Product page](#)

Datasheet for ABIN530026

anti-ADCK2 antibody (AA 1-626)

1 Image

Overview

Quantity:	100 µg
Target:	ADCK2
Binding Specificity:	AA 1-626
Reactivity:	Human
Host:	Rabbit
Clonality:	Polyclonal
Conjugate:	This ADCK2 antibody is un-conjugated
Application:	Western Blotting (WB)

Product Details

Purpose:	Rabbit polyclonal antibody raised against a full-length human ADCK2 protein.
Immunogen:	ADCK2 (NP_443085.2, 1 a.a. ~ 626 a.a) full-length human protein.
Sequence:	MVAPWRVSVR VCLSHLRCFE LRQGLSLLRP SECPRDARLC WLLLGTLPKV VSLCGDVGEG APDVLSRRRV RCGAAGAGP AESLPRAGPL GGVFLHLRLW LRAGALLVKF FPLLLLYPLT YLAPSVSTLW LHLLKATET SGPTYIKLGQ WASTRRDLFS EAFCAQFSKL HVRVTPHPWT HTERFLRQAF GDDWGSILSF ENREPVGSGC VAQVYKAYAN TAFLETDSVQ RLGRASCLPP FSHTGAVGGL RELFGYLGNG RKPPENLADQ SFLELRLPK ADLVGSNAGV SRAQVPGHQ EATNLISVAV KVLHPGLLAQ VHMDLLMKI GSRVLGVLPG IKWLSLPEIV EEFKLMVQQ IDLRYEAQNL EHFQVNFNRV KAVKFPTPLR PFVTREVLVE TYEESVPVSS YQAGIPVDL KRKIARLGIN MLLKMIFVDN FVHADLHPGN ILVQGANGLS SSQEAQLQQA DICDTLVVAV PSSLCPLRLV LLDAGIVAEL QAPDLRNFRA VFMAVVMGQG QRVAELILHH ARASECRDVE GFKTEMAMLV TQARKNTITL EKLHVSSLLS SVFKLLMTHK VKLESNFASI VFVAIMVLEGL

Product Details

GRSLDPKLDI LEAARPFLLT GPVCPP

Cross-Reactivity: Human

Characteristics: Antibody reactive against mammalian transfected lysate.

Target Details

Target: ADCK2

Alternative Name: ADCK2 ([ADCK2 Products](#))

Background: Full Gene Name: aarF domain containing kinase 2
Synonyms: AARF,MGC20727

Gene ID: 90956

NCBI Accession: [NM_052853](#)

Application Details

Application Notes: Optimal working dilution should be determined by the investigator.

Restrictions: For Research Use only

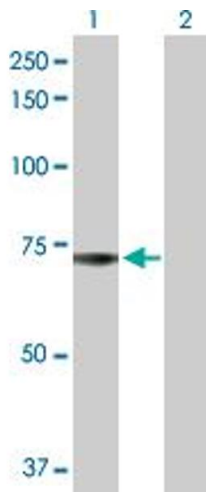
Handling

Buffer: In 1x PBS, pH 7.4

Handling Advice: Aliquot to avoid repeated freezing and thawing.

Storage: -20 °C

Storage Comment: Store at -20°C or lower. Aliquot to avoid repeated freezing and thawing.



Western Blotting

Image 1. Western Blot analysis of ADCK2 expression in transfected 293T cell line by ADCK2 MaxPab polyclonal antibody.

Lane 1: ADCK2 transfected lysate(69.00 KDa).

Lane 2: Non-transfected lysate.