



[Go to Product page](#)

Datasheet for ABIN530062
anti-CHURC1 antibody (AA 1-112)

3 Images

Overview

Quantity:	100 µg
Target:	CHURC1
Binding Specificity:	AA 1-112
Reactivity:	Human
Host:	Mouse
Clonality:	Monoclonal
Conjugate:	This CHURC1 antibody is un-conjugated
Application:	Western Blotting (WB), ELISA

Product Details

Purpose:	Mouse monoclonal antibody raised against a full-length recombinant CHURC1.
Immunogen:	CHURC1 (AAH20550, 1 a.a. ~ 112 a.a) full-length recombinant protein with GST tag. MW of the GST tag alone is 26 KDa.
Sequence:	MCGDCVGKEY PNRGNTCLEN GSFLNFTGC AVCSKRDFML ITNKSLKEED GEEIVTYDHL CKNCHHVIAR HEYTF SIMDE FQEY TMLCLL CGKAEDTISI LPDDPRQMTL LF
Clone:	2F9
Isotype:	IgG2a
Cross-Reactivity:	Human
Characteristics:	Antibody Reactive Against Recombinant Protein.

Target Details

Target:	CHURC1
Alternative Name:	CHURC1 (CHURC1 Products)
Background:	Full Gene Name: churchill domain containing 1 Synonyms: C14orf52,FLJ33064,My015,chch
Gene ID:	91612

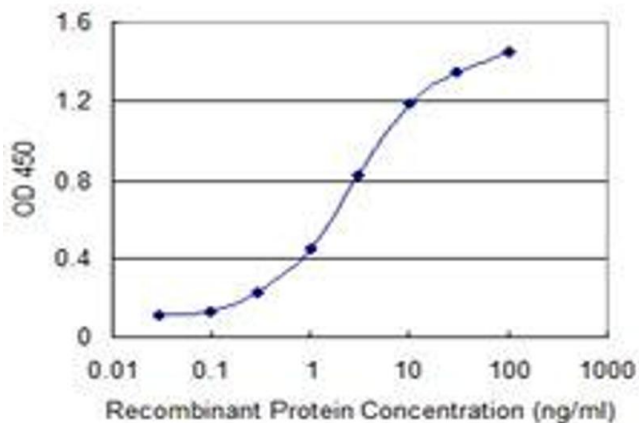
Application Details

Application Notes:	Optimal working dilution should be determined by the investigator.
Restrictions:	For Research Use only

Handling

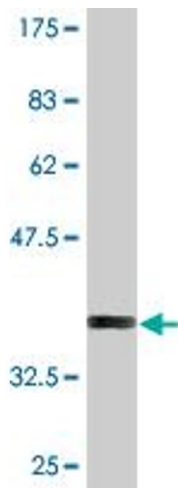
Buffer:	In 1x PBS, pH 7.4
Handling Advice:	Aliquot to avoid repeated freezing and thawing.
Storage:	-20 °C
Storage Comment:	Store at -20°C or lower. Aliquot to avoid repeated freezing and thawing.

Images



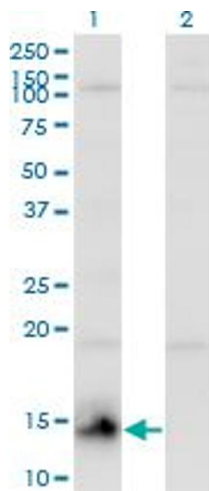
ELISA

Image 1. Detection limit for recombinant GST tagged CHURC1 is 0.03 ng/ml as a capture antibody.



Western Blotting

Image 2. Western Blot detection against Immunogen (38.06 kDa).



Western Blotting

Image 3. Western Blot analysis of CHURC1 expression in transfected 293T cell line by CHURC1 monoclonal antibody (M01), clone 2F9.

Lane 1: CHURC1 transfected lysate(13 kDa).

Lane 2: Non-transfected lysate.