



[Go to Product page](#)

Datasheet for ABIN530066
anti-DEPDC7 antibody (AA 393-499)

2 Images

Overview

Quantity:	100 µg
Target:	DEPDC7
Binding Specificity:	AA 393-499
Reactivity:	Human
Host:	Mouse
Clonality:	Monoclonal
Conjugate:	This DEPDC7 antibody is un-conjugated
Application:	ELISA, Immunoprecipitation (IP)

Product Details

Purpose:	Mouse monoclonal antibody raised against a partial recombinant LOC91614.
Immunogen:	LOC91614 (NP_631899, 393 a.a. ~ 499 a.a) partial recombinant protein with GST tag. MW of the GST tag alone is 26 KDa.
Sequence:	NPSEFKLQKE SDNRMVVKRI FSKAIVDNKN LSKGKTDLLV LFLMDHQKDV FKIPGTLHKI VSVKLMAIQN GRDPNRDAGY IYCQRIDQRD YSNNTEKTTK DELLNLL
Clone:	4D9
Isotype:	IgG2a
Cross-Reactivity:	Human
Characteristics:	Antibody Reactive Against Recombinant Protein.

Target Details

Target:	DEPDC7
Alternative Name:	DEPDC7 (DEPDC7 Products)
Background:	Full Gene Name: DEP domain containing 7 Synonyms: TR2,dJ85M6.4
Gene ID:	91614
NCBI Accession:	NM_139160

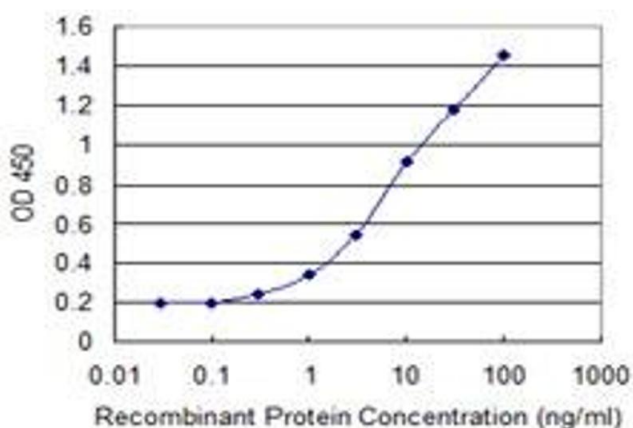
Application Details

Application Notes:	Optimal working dilution should be determined by the investigator.
Restrictions:	For Research Use only

Handling

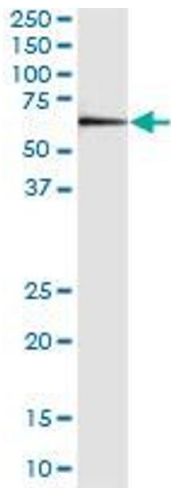
Buffer:	In 1x PBS, pH 7.4
Handling Advice:	Aliquot to avoid repeated freezing and thawing.
Storage:	-20 °C
Storage Comment:	Store at -20°C or lower. Aliquot to avoid repeated freezing and thawing.

Images



ELISA

Image 1. Detection limit for recombinant GST tagged DEPDC7 is 0.1 ng/ml as a capture antibody.



Immunoprecipitation

Image 2. Immunoprecipitation of DEPDC7 transfected lysate using anti-DEPDC7 monoclonal antibody and Protein A Magnetic Bead , and immunoblotted with DEPDC7 MaxPab rabbit polyclonal antibody.