



[Go to Product page](#)

Datasheet for ABIN530068
anti-LONRF1 antibody (AA 1-110)

3 Images

Overview

Quantity:	100 µg
Target:	LONRF1
Binding Specificity:	AA 1-110
Reactivity:	Human
Host:	Mouse
Clonality:	Monoclonal
Conjugate:	This LONRF1 antibody is un-conjugated
Application:	ELISA, Western Blotting (WB)

Product Details

Purpose:	Mouse monoclonal antibody raised against a partial recombinant LONRF1.
Immunogen:	LONRF1 (NP_689484, 1 a.a. ~ 110 a.a) partial recombinant protein with GST tag. MW of the GST tag alone is 26 KDa.
Sequence:	MEESQSLNEP SPKQSEEIPE VTSEPVKGSL NRAQSAQSIN STEMPAREDC LKRVSSEPVLSVQKEGVLLK RKLSLLEQDV IVNEDGRNKL KKQGETPNEV CMFSLAYGDI
Clone:	1D9
Isotype:	IgG1
Cross-Reactivity:	Human
Characteristics:	Antibody Reactive Against Recombinant Protein.

Target Details

Target:	LONRF1
Alternative Name:	LONRF1 (LONRF1 Products)
Background:	Full Gene Name: LON peptidase N-terminal domain and ring finger 1 Synonyms: FLJ23749,RNF191
Gene ID:	91694
NCBI Accession:	NM_152271

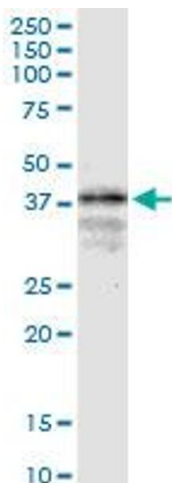
Application Details

Application Notes:	Optimal working dilution should be determined by the investigator.
Restrictions:	For Research Use only

Handling

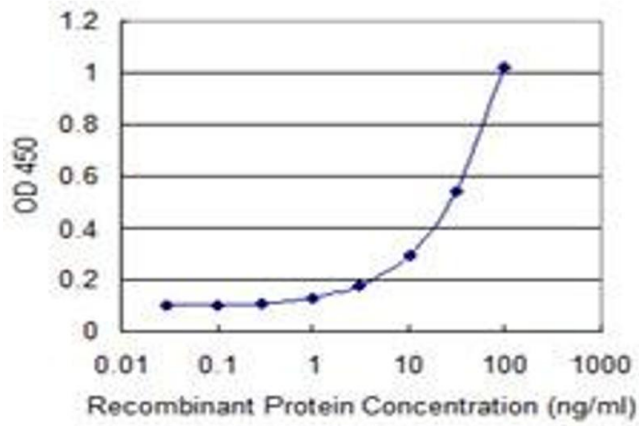
Buffer:	In 1x PBS, pH 7.4
Handling Advice:	Aliquot to avoid repeated freezing and thawing.
Storage:	-20 °C
Storage Comment:	Store at -20°C or lower. Aliquot to avoid repeated freezing and thawing.

Images



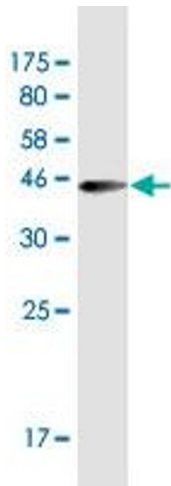
Western Blotting

Image 1. LONRF1 monoclonal antibody (M02), clone 1D9.
Western Blot analysis of LONRF1 expression in HepG2.



ELISA

Image 2. Detection limit for recombinant GST tagged LONRF1 is 1 ng/ml as a capture antibody.



Western Blotting

Image 3. Western Blot detection against Immunogen (37.84 KDa).