



[Go to Product page](#)

Datasheet for ABIN530076

anti-CABLES1 antibody (AA 1-368)

2 Images

Overview

Quantity:	50 µg
Target:	CABLES1
Binding Specificity:	AA 1-368
Reactivity:	Human
Host:	Mouse
Clonality:	Polyclonal
Conjugate:	This CABLES1 antibody is un-conjugated
Application:	Western Blotting (WB), Immunofluorescence (IF)

Product Details

Purpose:	Mouse polyclonal antibody raised against a full-length human CABLES1 protein.
Immunogen:	CABLES1 (NP_612384.1, 1 a.a. ~ 368 a.a) full-length human protein.
Sequence:	MLSKRGCHAR IYADFPIRRL ISQRSSLETL EDIEENAPLR RCRTLSGSPR PKNFKKIIFI KNMRQHDTRN GRIVLISGRR SFCSIFS VLP YRDSTQVGD L KLDGGRQSTG AVSLKEIIGL EGVELGADGK TVSYTQFLLP TNAFGARRNT IDSTSSFSQF RNLSHRSLSI GRASGTQGSL DTGSDLGDFM DYDPNLLDDP QWPCGKHKRV LIFPSYMTTV IDYVKPSDLK KDMNETFKEK FPHIKLTL SK IRSLKREMRK LAQEDCGLEE PTVAMAFVYF EKLALKGKLN KQNRKLCAGA CVLLAAKIGS DLKKHEVKHL IDKLEEKFRL NRRELIAFEF PVLVALEFAL HLPEHEVMPH YRRLVQSS
Cross-Reactivity:	Human
Characteristics:	Antibody reactive against mammalian transfected lysate.

Target Details

Target:	CABLES1
Alternative Name:	CABLES1 (CABLES1 Products)
Background:	Full Gene Name: Cdk5 and Abl enzyme substrate 1 Synonyms: CABLES,FLJ35924,HsT2563,IK3-1
Gene ID:	91768
NCBI Accession:	NM_138375

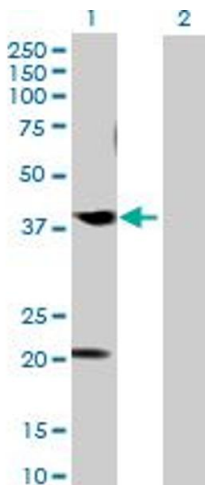
Application Details

Application Notes:	Optimal working dilution should be determined by the investigator.
Restrictions:	For Research Use only

Handling

Buffer:	In 1x PBS, pH 7.4
Handling Advice:	Aliquot to avoid repeated freezing and thawing.
Storage:	-20 °C
Storage Comment:	Store at -20°C or lower. Aliquot to avoid repeated freezing and thawing.

Images

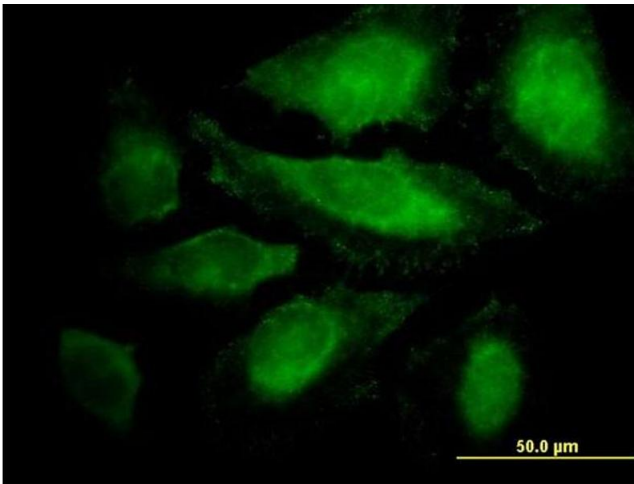


Western Blotting

Image 1. Western Blot analysis of CABLES1 expression in transfected 293T cell line by CABLES1 MaxPab polyclonal antibody.

Lane 1: CABLES1 transfected lysate(40.48 KDa).

Lane 2: Non-transfected lysate.



Immunofluorescence

Image 2. Immunofluorescence of purified MaxPab antibody to CABLES1 on HeLa cell. [antibody concentration 10 ug/ml]