

Datasheet for ABIN530101

anti-STRADA antibody (AA 251-346)

5 Images



[Go to Product page](#)

Overview

| | |
|----------------------|---|
| Quantity: | 100 µg |
| Target: | STRADA |
| Binding Specificity: | AA 251-346 |
| Reactivity: | Human |
| Host: | Mouse |
| Clonality: | Monoclonal |
| Conjugate: | This STRADA antibody is un-conjugated |
| Application: | Western Blotting (WB), ELISA, Immunohistochemistry (Paraffin-embedded Sections) (IHC (p)), Proximity Ligation Assay (PLA) |

Product Details

| | |
|-------------------|---|
| Purpose: | Mouse monoclonal antibody raised against a partial recombinant LYK5. |
| Immunogen: | LYK5 (NP_699166.2, 251 a.a. ~ 346 a.a) partial recombinant protein with GST tag. MW of the GST tag alone is 26 KDa. |
| Sequence: | LLEKLNGTVP CLLDTSTIPA EELTMSPSR S VANSGLSDSL TTSTPRPSNG DSPSHPYHRT FSPHFHHFVE QCLQRNPDAR YPCWPGPGLR ESRGCS |
| Clone: | 4E4 |
| Isotype: | IgG2a |
| Cross-Reactivity: | Human |
| Characteristics: | Antibody Reactive Against Recombinant Protein. |

Target Details

| | |
|-------------------|--|
| Target: | STRADA |
| Alternative Name: | STRADA (STRADA Products) |
| Background: | Full Gene Name: STE20-related kinase adaptor alpha Synonyms: FLJ90524,LYK5,NY-BR-96,PMSE,STRAD,Stlk |
| Gene ID: | 92335 |
| NCBI Accession: | NM_153335 |
| Pathways: | AMPK Signaling |

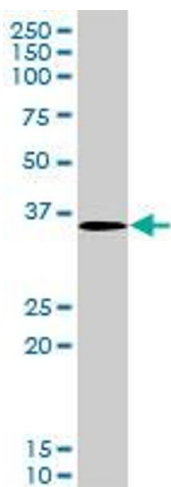
Application Details

| | |
|--------------------|--|
| Application Notes: | Optimal working dilution should be determined by the investigator. |
| Restrictions: | For Research Use only |

Handling

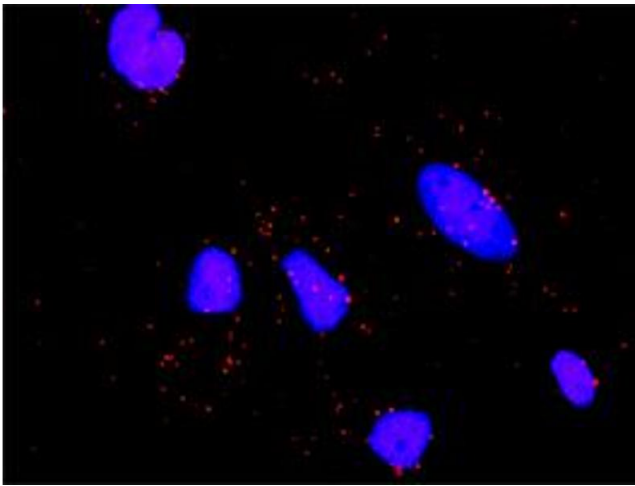
| | |
|------------------|--|
| Buffer: | In 1x PBS, pH 7.4 |
| Handling Advice: | Aliquot to avoid repeated freezing and thawing. |
| Storage: | -20 °C |
| Storage Comment: | Store at -20°C or lower. Aliquot to avoid repeated freezing and thawing. |

Images



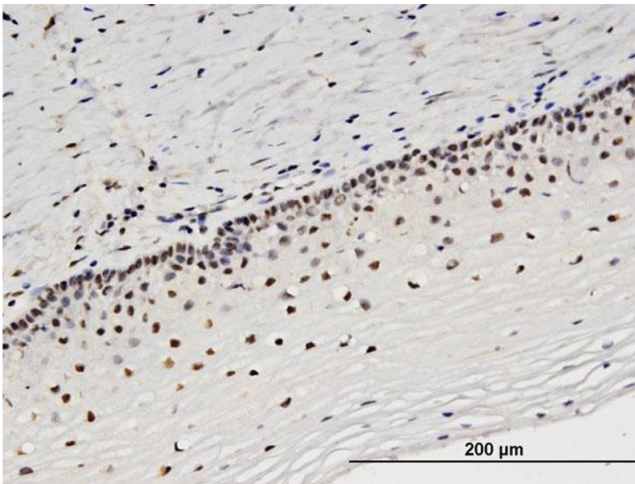
Western Blotting

Image 1. LYK5 monoclonal antibody (M02), clone 4E4.
Western Blot analysis of LYK5 expression in Hela S3 NE .



Proximity Ligation Assay

Image 2. Proximity Ligation Analysis of protein-protein interactions between STK11 and STRADA. HeLa cells were stained with anti-STK11 rabbit purified polyclonal 1:1200 and anti-STRADA mouse monoclonal antibody 1:50. Each red dot represents the detection of protein-protein interaction complex, and nuclei were counterstained with DAPI (blue).



Immunostaining

Image 3. Immunoperoxidase of monoclonal antibody to STRADA on formalin-fixed paraffin-embedded human uterine cervix. [antibody concentration 6 ug/ml]

Please check the [product details page](#) for more images. Overall 5 images are available for ABIN530101.