



[Go to Product page](#)

Datasheet for ABIN530104
anti-CRB3 antibody (AA 1-120)

1 Image

Overview

Quantity:	50 µg
Target:	CRB3
Binding Specificity:	AA 1-120
Reactivity:	Human
Host:	Mouse
Clonality:	Polyclonal
Conjugate:	This CRB3 antibody is un-conjugated
Application:	Western Blotting (WB)

Product Details

Purpose:	Mouse polyclonal antibody raised against a full-length human CRB3 protein.
Immunogen:	CRB3 (NP_631900.1, 1 a.a. ~ 120 a.a) full-length human protein.
Sequence:	MANPGLGLLL ALGLPFLAR WGRAWGQIQT TSANENSTVL PSSTSSSSDG NLRPEAITAI IVVFSLLAAL LLAVGLALLV RKLREKRQTE GTYRPSSEEQ VGARVPPTPN LKLPPEERLI
Cross-Reactivity:	Human
Characteristics:	Antibody reactive against mammalian transfected lysate.

Target Details

Target:	CRB3
Alternative Name:	CRB3 (CRB3 Products)

Target Details

Background:	Full Gene Name: crumbs homolog 3 (Drosophila) Synonyms:
Gene ID:	92359
NCBI Accession:	NM_139161
Pathways:	Notch Signaling , Cell-Cell Junction Organization

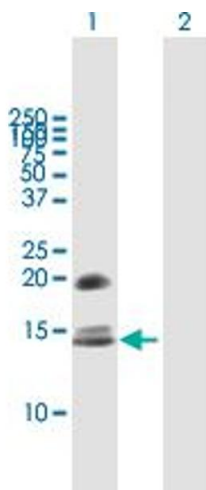
Application Details

Application Notes:	Optimal working dilution should be determined by the investigator.
Restrictions:	For Research Use only

Handling

Buffer:	In 1x PBS, pH 7.4
Handling Advice:	Aliquot to avoid repeated freezing and thawing.
Storage:	-20 °C
Storage Comment:	Store at -20°C or lower. Aliquot to avoid repeated freezing and thawing.

Images



Western Blotting

Image 1. Western Blot analysis of CRB3 expression in transfected 293T cell line by CRB3 MaxPab polyclonal antibody.

Lane 1: CRB3 transfected lysate(13.2 KDa).

Lane 2: Non-transfected lysate.