



[Go to Product page](#)

Datasheet for ABIN530108
anti-CHMP4C antibody (AA 1-233)

1 Image

Overview

Quantity:	50 µg
Target:	CHMP4C
Binding Specificity:	AA 1-233
Reactivity:	Human
Host:	Mouse
Clonality:	Polyclonal
Conjugate:	This CHMP4C antibody is un-conjugated
Application:	Western Blotting (WB)

Product Details

Purpose:	Mouse polyclonal antibody raised against a full-length human CHMP4C protein.
Immunogen:	CHMP4C (NP_689497.1, 1 a.a. ~ 233 a.a) full-length human protein.
Sequence:	MSKLGKFFKG GGSSKSRAAP SPQEALVRLR ETEEMLGKKQ EYLENRIQRE IALAKKHGTQ NKRAALQALK RKKRFEKQLT QIDGTLSTIE FQREALENSH TNTEVLRNMG FAAKAMKSVH ENMDLNKIDD LMQEITEQQD IAQEISEAFS QRVGFGDDFD EDELMAELEE LEQEELNKKM TNIRLPNVPS SSLPAQPNRK PGMSSSTARRS RAASSQRAEE EDDDIKQLAA WAT
Cross-Reactivity:	Human
Characteristics:	Antibody reactive against mammalian transfected lysate.

Target Details

Target:	CHMP4C
---------	--------

Target Details

Alternative Name:	CHMP4C (CHMP4C Products)
Background:	Full Gene Name: chromatin modifying protein 4C Synonyms: MGC22825,SNF7-3,Shax3
Gene ID:	92421
NCBI Accession:	NM_152284

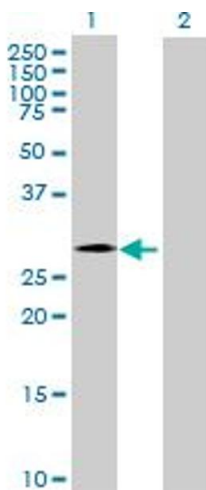
Application Details

Application Notes:	Optimal working dilution should be determined by the investigator.
Restrictions:	For Research Use only

Handling

Buffer:	In 1x PBS, pH 7.4
Handling Advice:	Aliquot to avoid repeated freezing and thawing.
Storage:	-20 °C
Storage Comment:	Store at -20°C or lower. Aliquot to avoid repeated freezing and thawing.

Images



Western Blotting

Image 1. Western Blot analysis of CHMP4C expression in transfected 293T cell line by CHMP4C MaxPab polyclonal antibody.

Lane 1: CHMP4C transfected lysate(25.63 KDa).

Lane 2: Non-transfected lysate.