



[Go to Product page](#)

Datasheet for ABIN530110

## anti-LDHAL6B antibody (AA 282-381)

### 3 Images

#### Overview

Quantity:	100 µg
Target:	LDHAL6B
Binding Specificity:	AA 282-381
Reactivity:	Human
Host:	Mouse
Clonality:	Monoclonal
Conjugate:	This LDHAL6B antibody is un-conjugated
Application:	Western Blotting (WB), ELISA

#### Product Details

Purpose:	Mouse monoclonal antibody raised against a partial recombinant LDHAL6B.
Immunogen:	LDHAL6B (NP_005497, 282 a.a. ~ 381 a.a) partial recombinant protein with GST tag. MW of the GST tag alone is 26 KDa.
Sequence:	EVTATAYEII KMKGYTSWAI GLSVADLTES ILKNLRRRIHP VSTITKGLYG IDEEVFLSIP CILGENGITN LIKIKLTPEE EAHLKKS Akt LWEIQNKLKL
Clone:	1A3
Isotype:	IgG2b
Cross-Reactivity:	Human
Characteristics:	Antibody Reactive Against Recombinant Protein.

## Target Details

Target:	LDHAL6B
Alternative Name:	LDHAL6B ( <a href="#">LDHAL6B Products</a> )
Background:	Full Gene Name: lactate dehydrogenase A-like 6B Synonyms: LDHAL6,LDHL
Gene ID:	92483
NCBI Accession:	<a href="#">NM_033195</a>

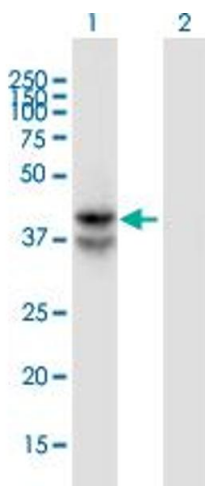
## Application Details

Application Notes:	Optimal working dilution should be determined by the investigator.
Restrictions:	For Research Use only

## Handling

Buffer:	In 1x PBS, pH 7.4
Handling Advice:	Aliquot to avoid repeated freezing and thawing.
Storage:	-20 °C
Storage Comment:	Store at -20°C or lower. Aliquot to avoid repeated freezing and thawing.

## Images

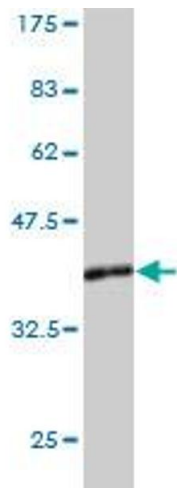


### Western Blotting

**Image 1.** Western Blot analysis of LDHAL6B expression in transfected 293T cell line by LDHAL6B monoclonal antibody (M01), clone 1A3.

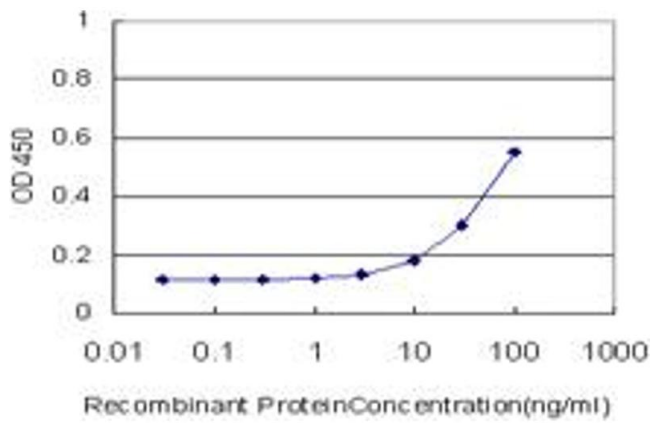
Lane 1: LDHAL6B transfected lysate (Predicted MW: 42 KDa).

Lane 2: Non-transfected lysate.



### Western Blotting

**Image 2.** Western Blot detection against Immunogen (36.74 KDa).



### ELISA

**Image 3.** Detection limit for recombinant GST tagged LDHAL6B is approximately 3ng/ml as a capture antibody.